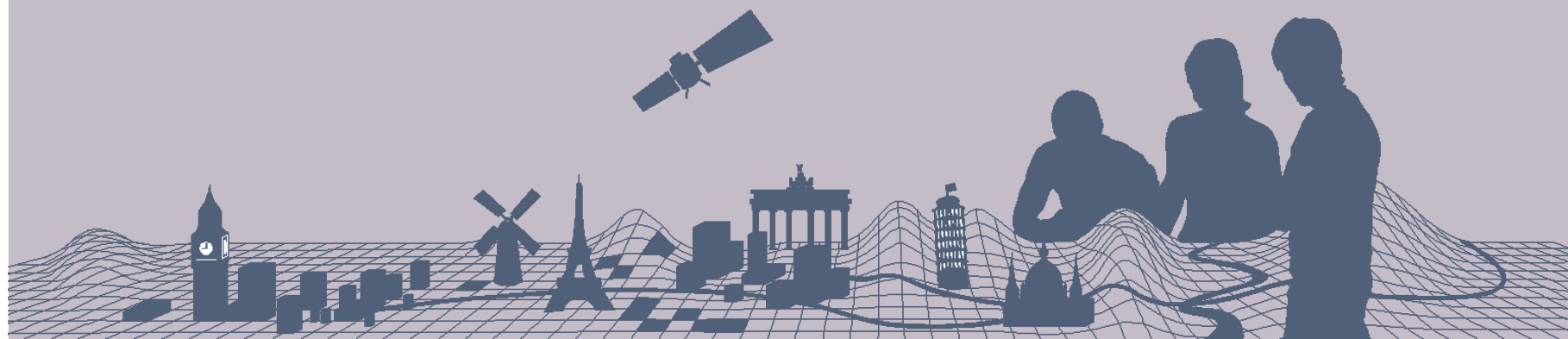


Summary of main points from the Round Table sessions



Do you support the draft vision, strategy and organisational approach in the future of ELS?

- Yes, all support, but do have some reservations and some things need to be clarified
- Although the NMCAs do support ELS, there might be some restrictions on the level of support due to national policies on resourcing
- If EuroGeographics does not take ELS forward who else would do it – so need to support this approach.
- ELF has provided a good platform for collaborating and has helped to develop national services, ELS will continue this collaboration
- Need more discussion on the participation of members in creating the ELS initial operational structure
- Concern that we don't know who the ELS users are and what content the market is demanding?



Are there additional strategic actions required to deliver on this draft strategy?

- Additional mechanisms required to support members especially non-EU, gaining commitment with the members is key
- Communication with NMCAs needs to be stronger to ensure support
- The GA is key point in time to get commitment and gauge commitment from the DG's
- A one pager would be useful on WHY the DG's should support this and get it out prior to the GA and then discuss at the GA
- Firmer outline of the business case is required and should be presented to members pre-GA
- Communication of the vision and strategy needs to be simpler and presented in a more clear way



Are there additional strategic actions required to deliver on this draft strategy?

- We have to decide who we are delivering ELS for, and do some market segmentation
- Must take the line of a market drive approach, this has been missing.
- We need some strong user cases from a customer point of view to demonstrate the value of ELS and get both data providers and then users on board.
- Need to demonstrate ELS unique selling points, and the benefits of harmonised cross board pan-European data – must have a good stable showcase application that is impactful and persuasive



What support can you give to help make this happen?

- EuroGeographics needs to be explicit in what support it is asking for, communication needs to be clearer
- Take small steps at the start and build from there
- Focus on getting the commitment of DG's this will then spill over into their organisations, technical support can be provided but it must be supported at the highest level
- Discuss with national GI players what European services are required
- Cooperation at national level and convincing other national public departments to join
- Initiation/contribution to smaller projects in relation to ELF goals



What support can you give to help make this happen?

- One member supports another – a room for bilateral training activities / projects
- Contributions to ELS through the EuroGeographics KENs



- Thank you for your input!
- We will use this to improve the vision, mission and the way we communicate to our members
- We count on you (our members) to make it possible to achieve ELS

