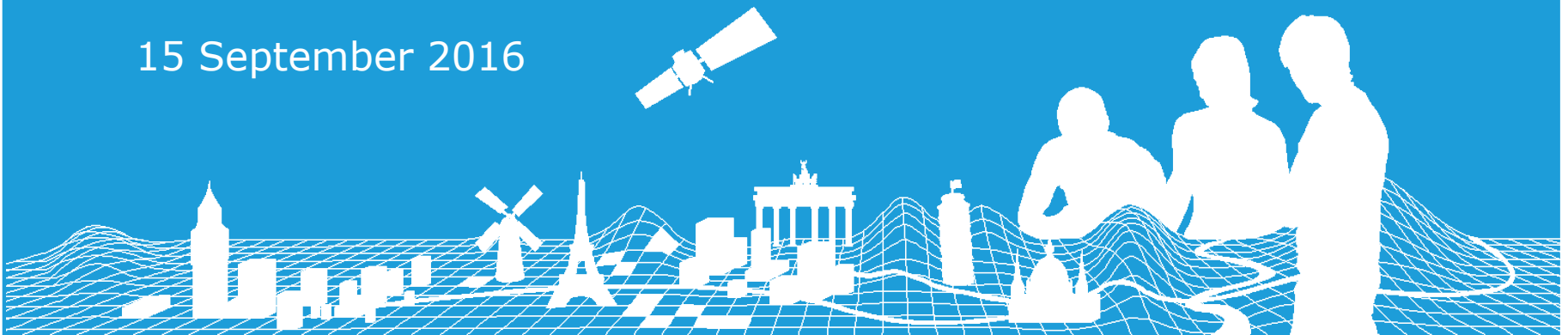


The Future of European Location Services

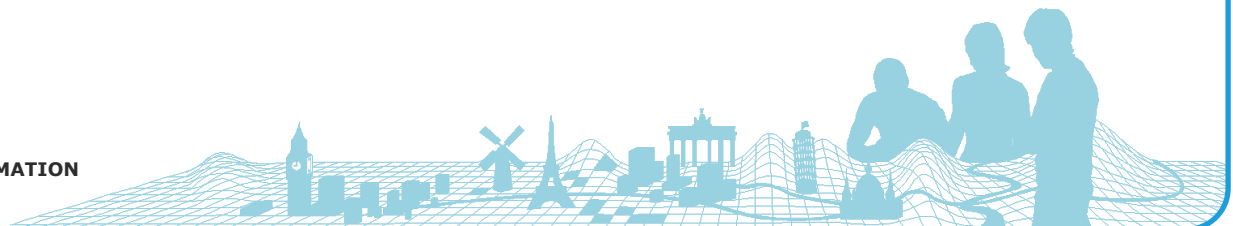
Abigail Page – Technical Product Development Manager

15 September 2016



What I will talk about:

- What is ELF & Why is it important
- The platform & products
- A demo !
- Key Achievements
- What's next.....

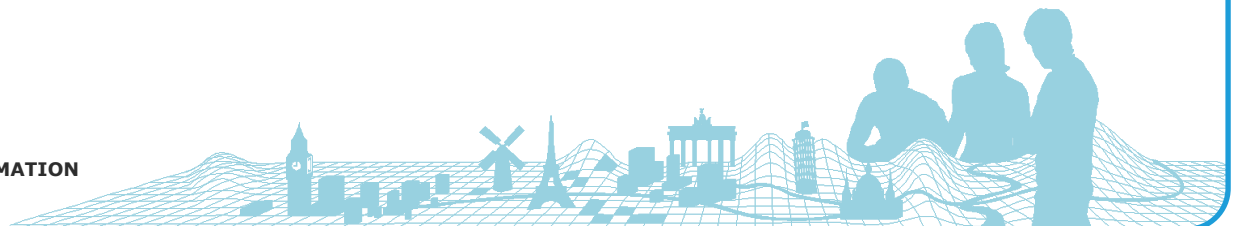


What I will talk about:

- What is ELF & Why is it important
- The platform & products
- A demo !
- Key Achievements
- What's next.....

What YOU will talk about:

- Learning from the “journey” of the existing products

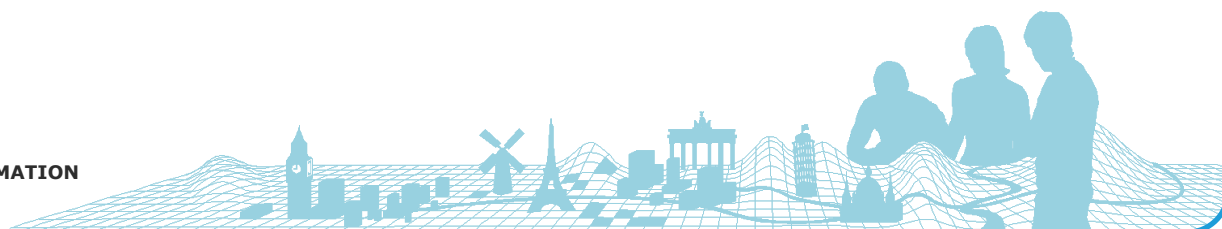


What is the European Location Framework?



The European Location Framework is:

- The gateway to pan-European maps, geographic & land information from national sources.
- A single source of official, quality-assured data from Europe's National Mapping, Cadastral & Land Registry Authorities (NMCAs).
- A single point of access for licensing official data from different agencies & different countries.



Why is it important?



The European Location Framework provides:

- Harmonised data quality, specifications & standards
- Harmonised pricing & licensing
- Harmonised access to NMCA data



What are the benefits?



The European Location Framework:

- Saves time & costs
- Encourages reuse of public sector information (PSI)

Datasets are:

- Accessed from a **single source** – no need to approach multiple countries, negotiate multiple licenses or pay multiple fees
- Delivered to **common & consistent specifications** – no need for further harmonisation
- **Consumed as a service** – simplifies information management



Why is it important for NMCAS?

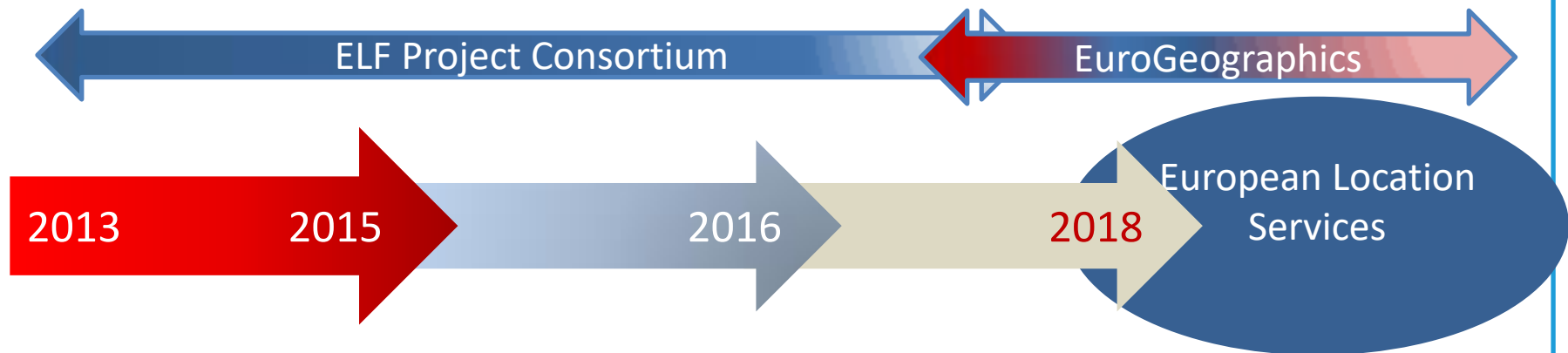


The European Location Framework:

- Ensures NMCA data is used across Europe by meeting user needs.
- Complements the work of NMCAs.
- Helps NMCAs to meet national policy & legal commitments, increases reuse of PSI
- Demonstrates how international collaboration contributes to the wider public good.



Timescales



2013
Project
start

May 2016
• Testing

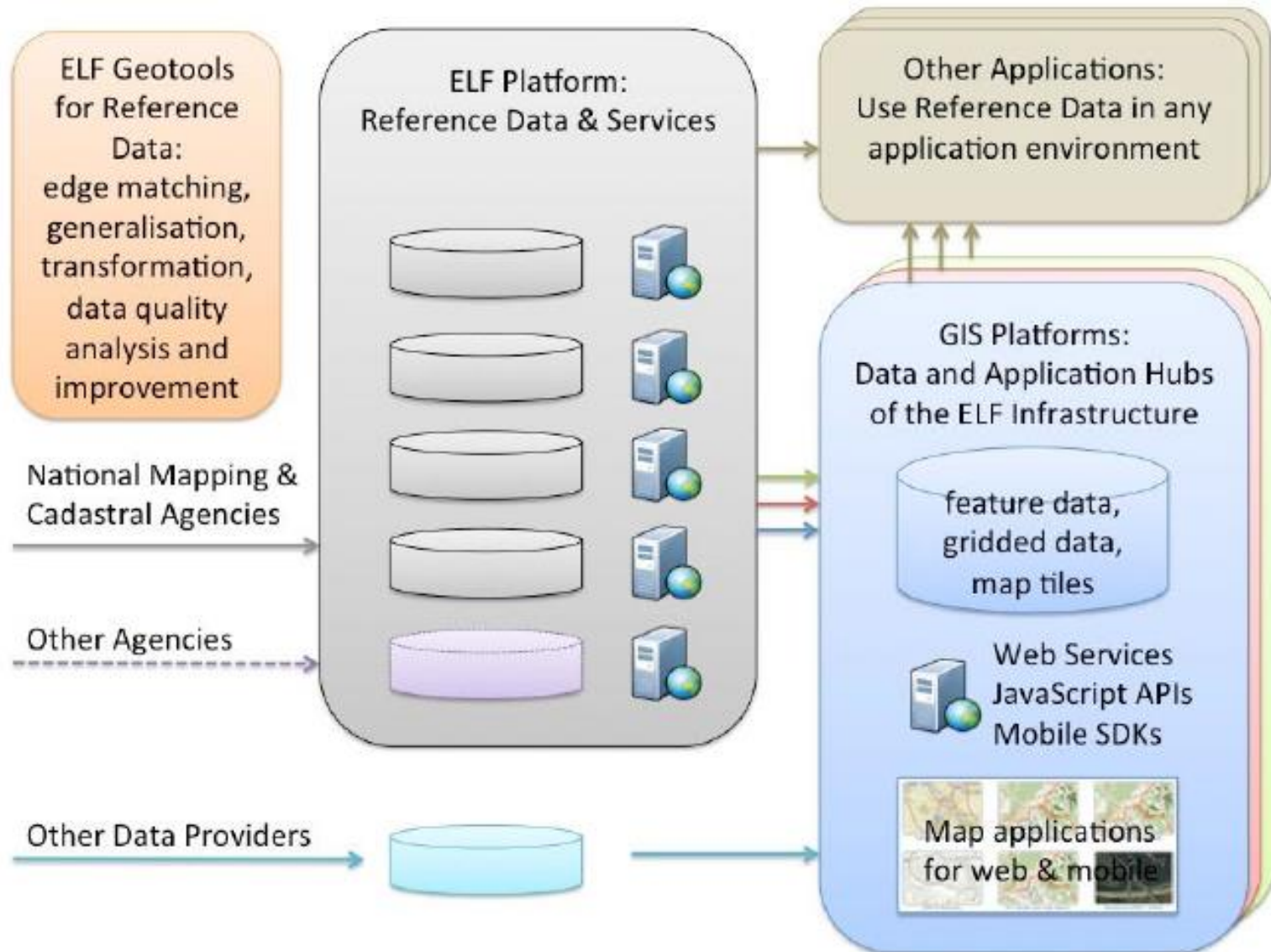
Oct 2016
• Project end

• Transition phase
begins

2016 – 2018
• Development of an
Operational service



The Platform




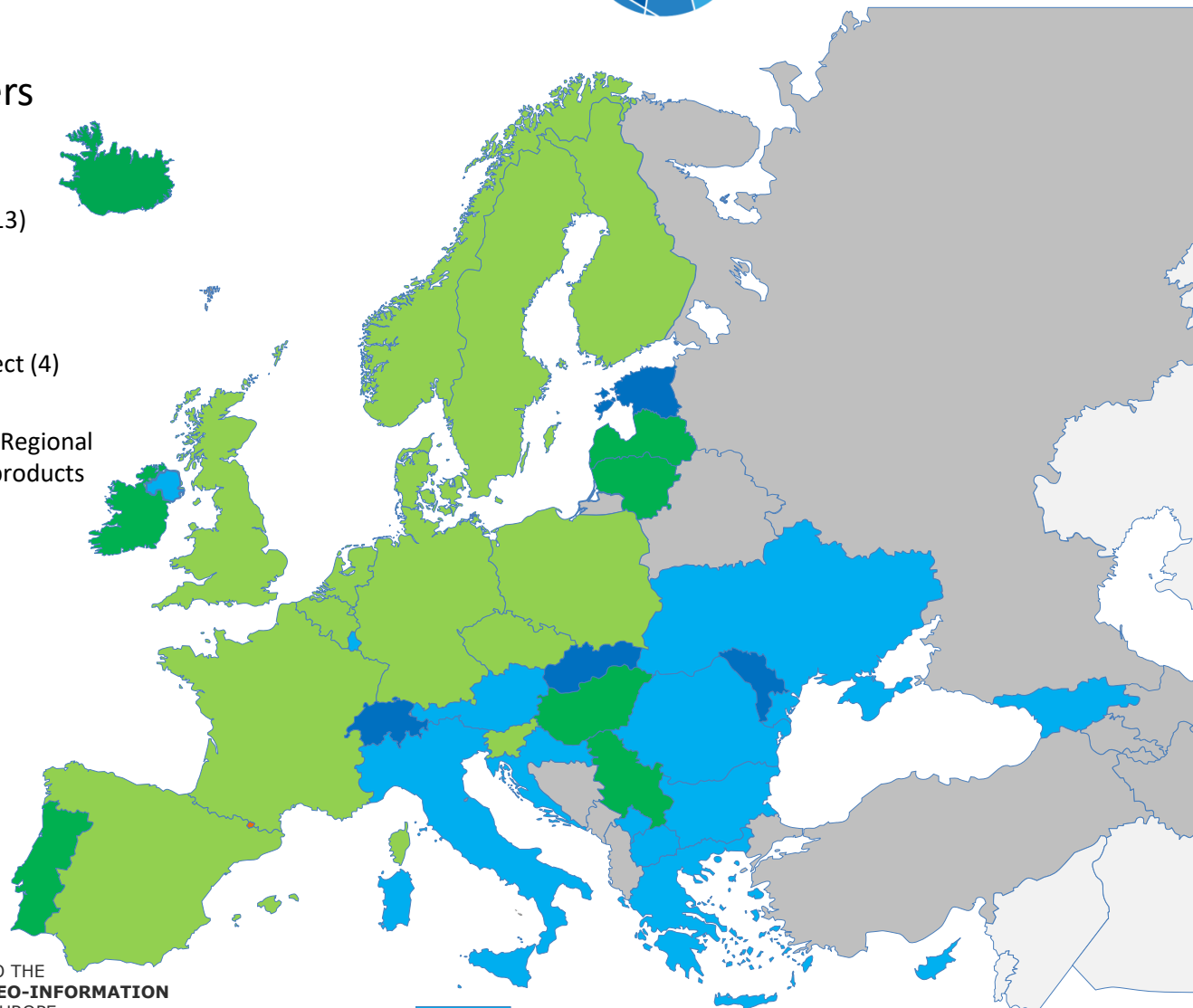
Content is key



ELF EUROPEAN
LOCATION
FRAMEWORK

Data content providers in 2016/17

-  Project partner countries (13)
-  Joined 2016 (7 countries)
-  Data provider outside project (4)
-  Contributors to ELF Global/Regional through EuroGeographics products ERM,EGM,EBM



Malta

Which data themes are included in ELF?



Data Providers are enabling ELF to provide a one access point for:

- Administrative Units,
- Addresses,
- Geographical Names,
- Hydrography (Physical waters, Network),
- Land Cover, Transport Networks (Air, Roads, Rail, Cable, Water),
- Elevation,
- Buildings (2D, 2D Extended),
- Cadastral parcels,
- Protected Sites,
- Sea Regions



ELF View Services



- **ELF Topographic Base Map**

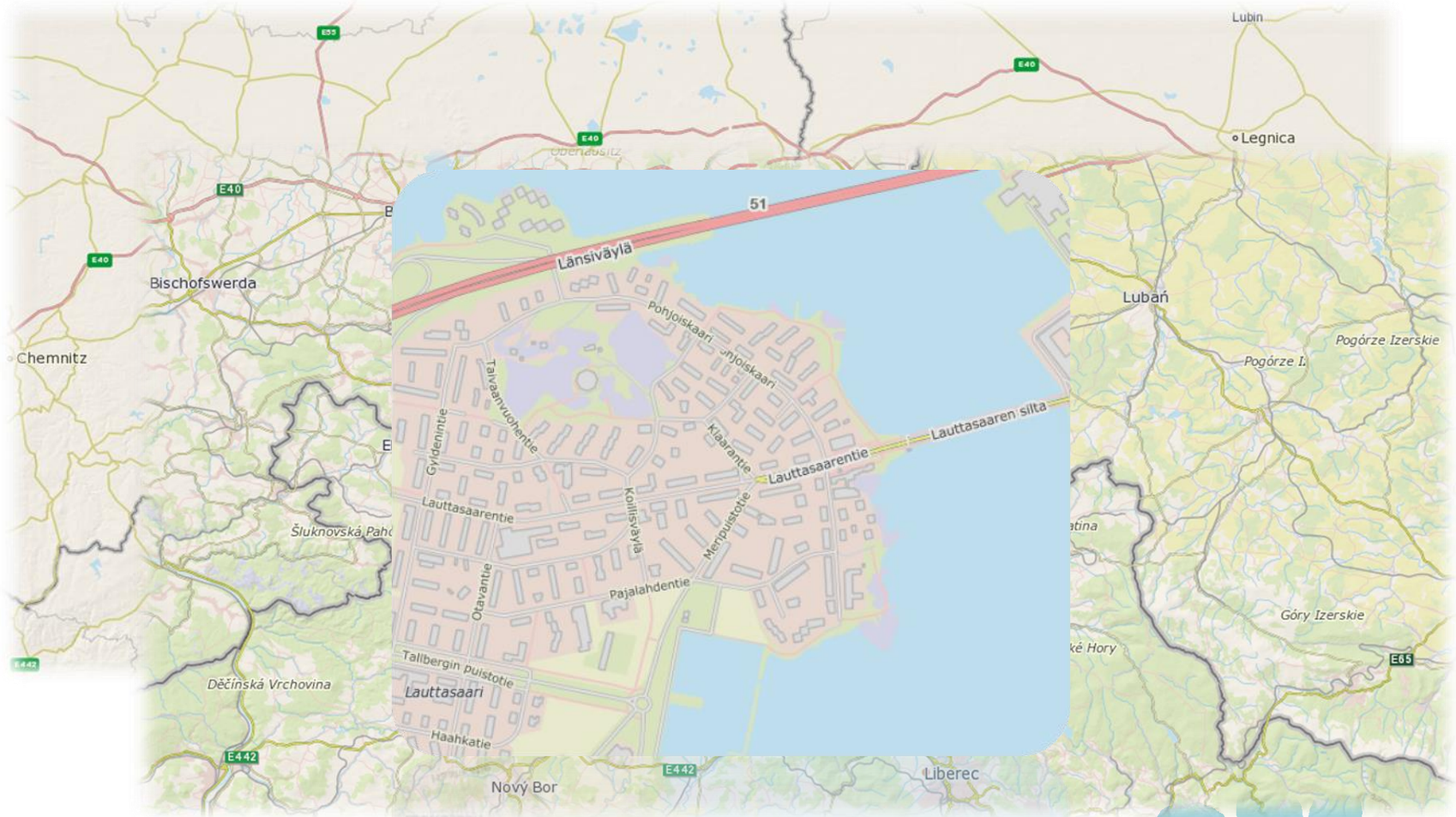
- Pan-European Web Map Tile Service (WMTS)
- Pre-styled contextual data, suitable as reference data for a wide range of applications
- Data from Existing EG Products (small scale) and NMCA National Services (large scale)

- **ELF Cadastral Index Map**

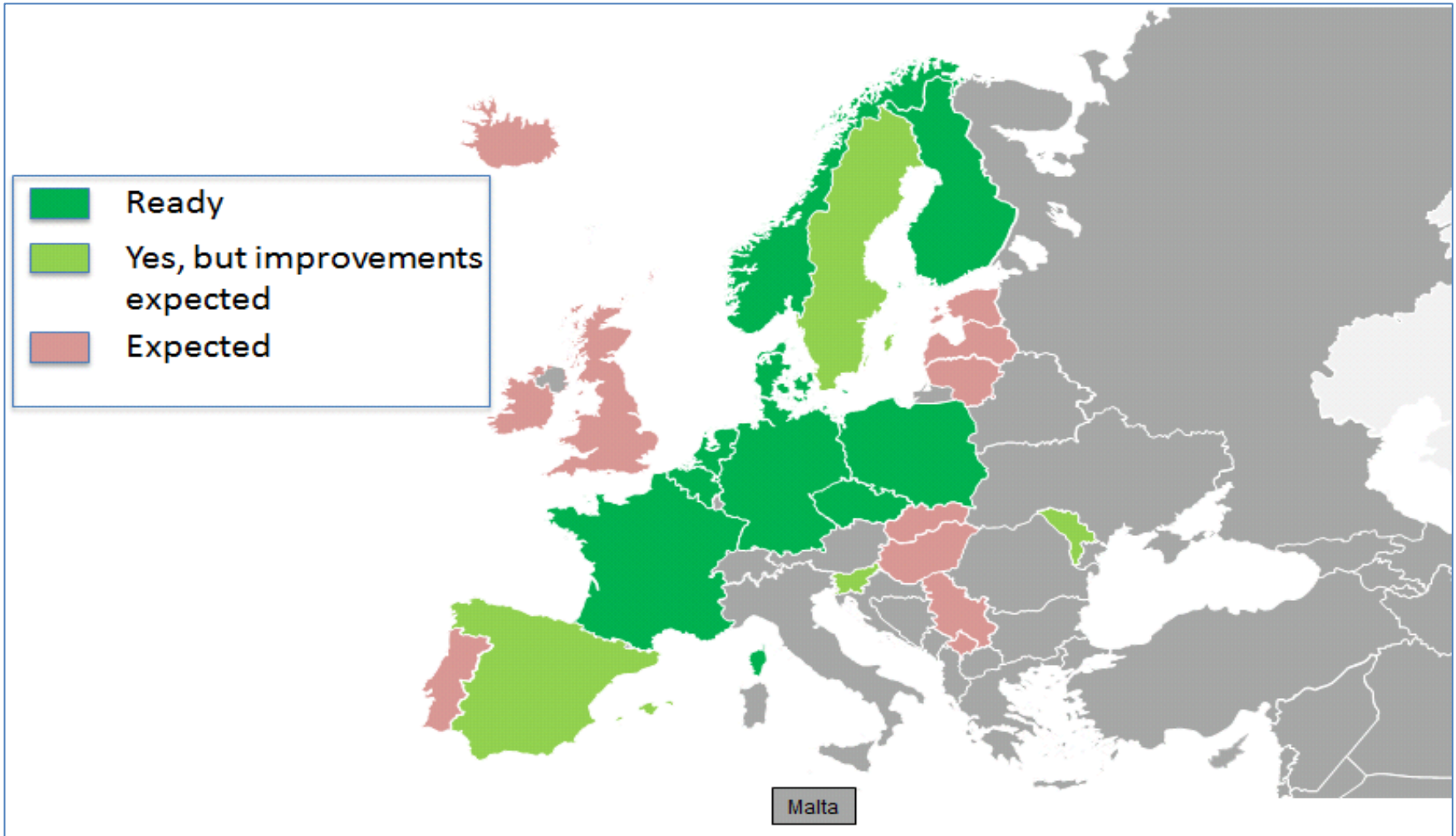
- Pan-European Web Map Service (WMS)
- Pre-styled Administrative Boundaries, Cadastral Parcels, Buildings, Addresses
- An index for land & property information



ELF Topographic Base Map



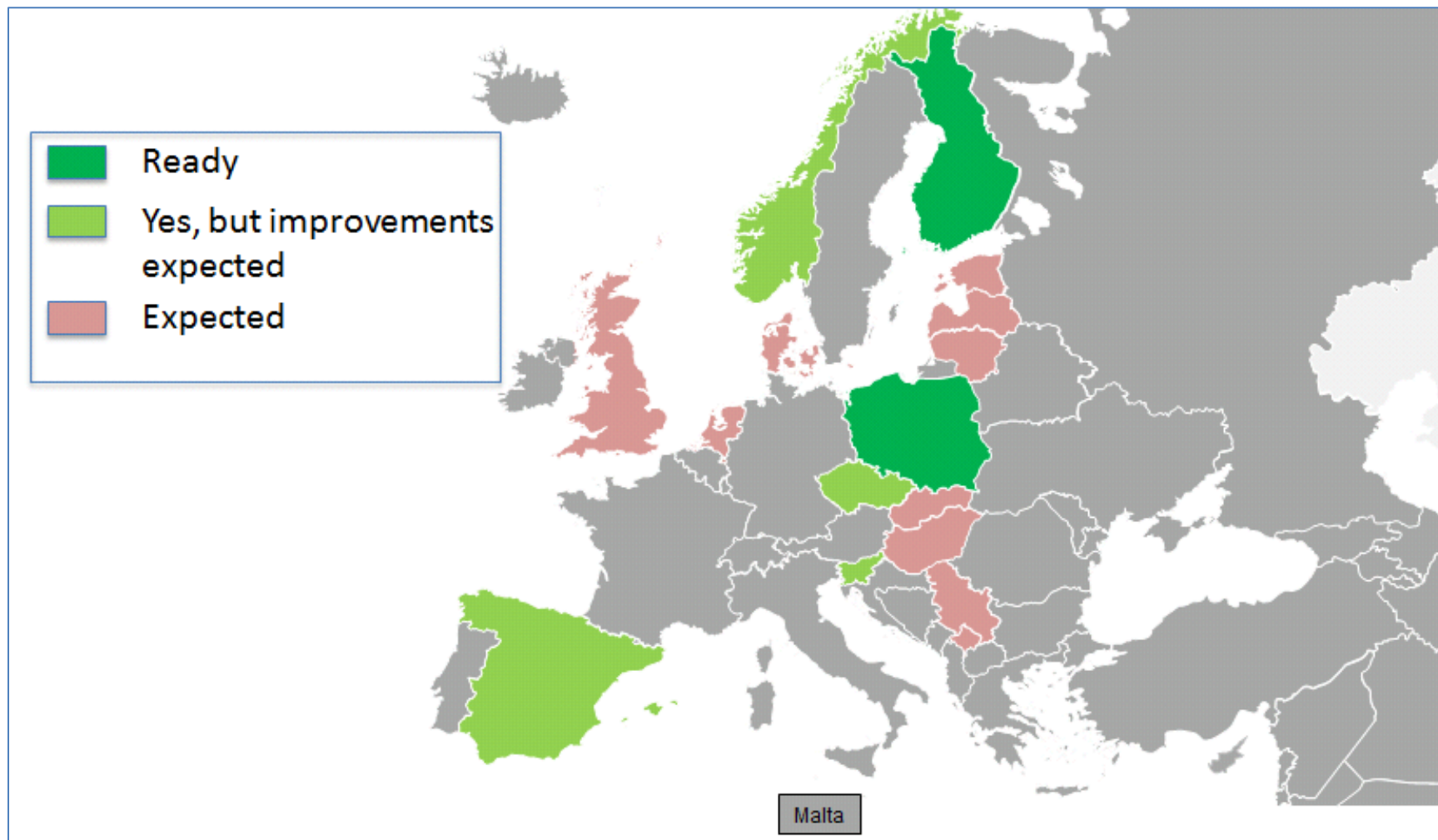
Coverage: ELF Topographic Base Map



ELF Cadastral Index map



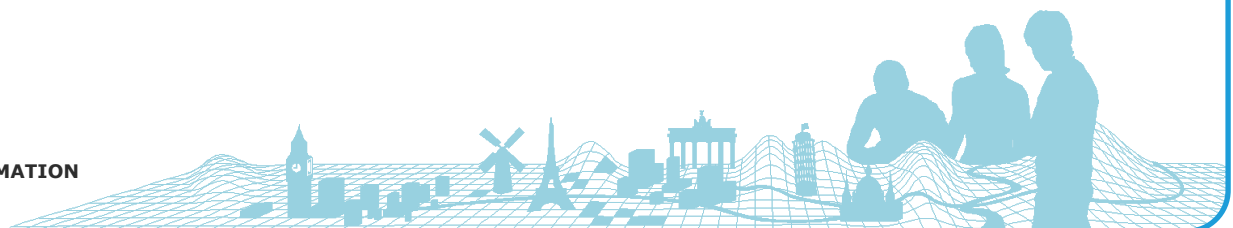
Content: ELF Cadastral Index Map



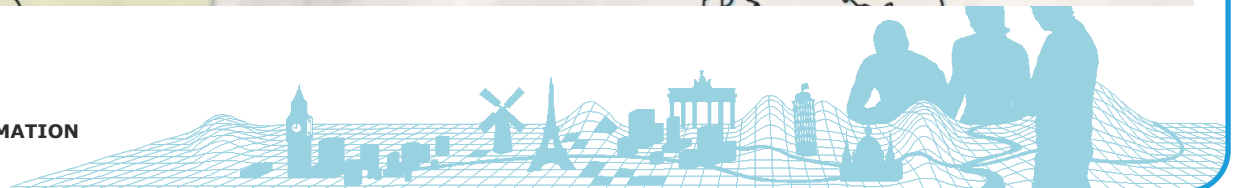
ELF Download Services



- Provides direct access to features (WFS)
- A wide range of themes available (INSPIRE Annex 1)
 - Administrative units, Address, Land Cover, Transport, Hydrography.....
- Cascaded Services (one service for cross-border data)
- INSPIRE Compliant Specification
- Provides feature information to support valuable analysis in applications
- Provision at both Regional and National levels of detail



ELF Download Services: Standing Water & Water Courses

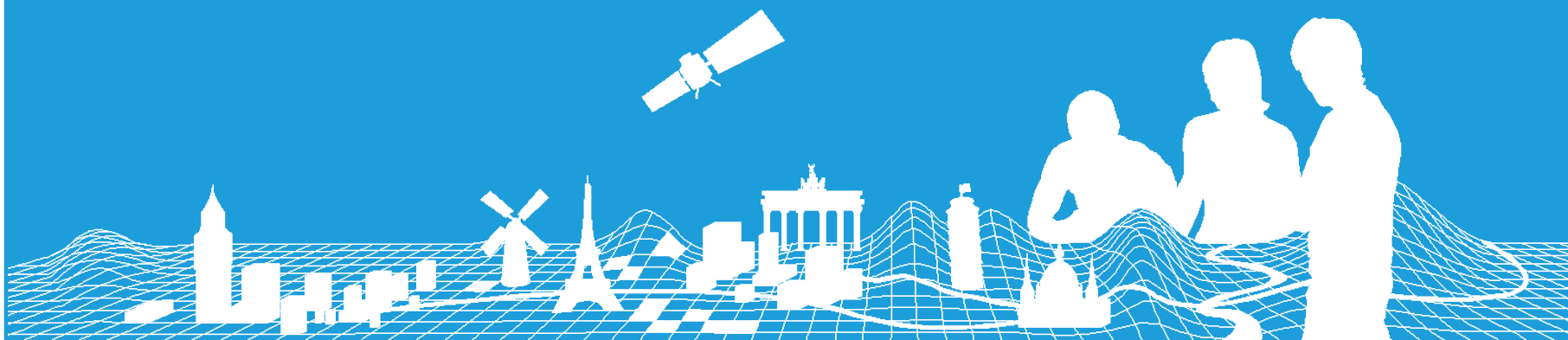


Achievements



- Technical infrastructure for future services
 - Enabling users to incorporate data into application environment.
- Test Services
 - Offers pilot products & services to defined international standards.
- Tools
 - For data harmonisation & edge-matching.
 - For identifying areas of interest & products.
- Practical example of INSPIRE implementation
 - Supporting the delivery of national web feature services.
 - Providing valuable feedback on data specifications.





What happens after the project?

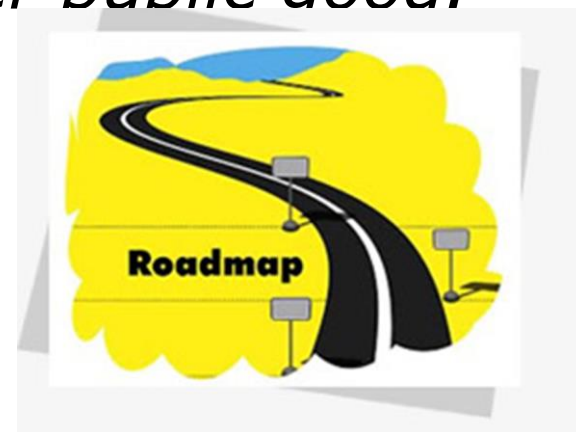
- ELF Project concludes in October
- According to the Delivery of Work Schedule:
 - EuroGeographics will take ownership of System architecture and the management of combined content developed by the project
 - Data content providers will continue to deliver to ELF
 - Software providers will cover license fees and support to allow the architecture to continue beyond the project for a period of 2 years (After which new contracts will have to be made)

Statement of Strategic Intent (Vision / Mission)

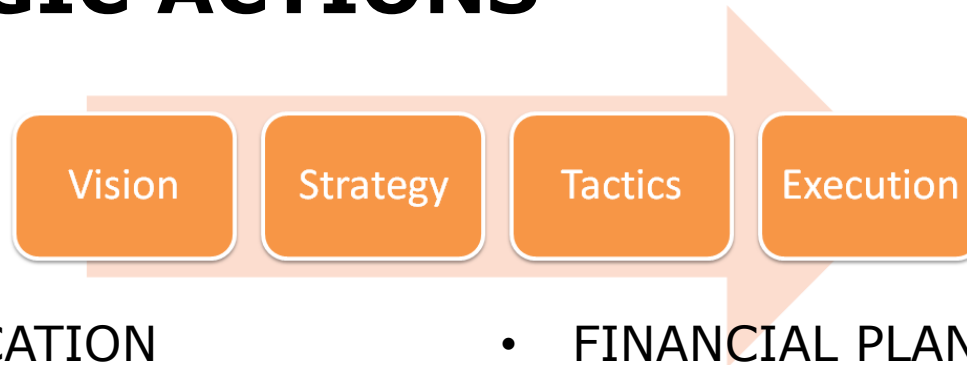
To provide the single access point for international users of harmonised, pan-European, authoritative geospatial information and services.

For National mapping, cadastral and land registry authorities to be recognised in our International effort to contribute to the wider public good.

- This is our ambition - it is ambitious!
- It will take many years to fully achieve
- Expresses our commitment to contribute

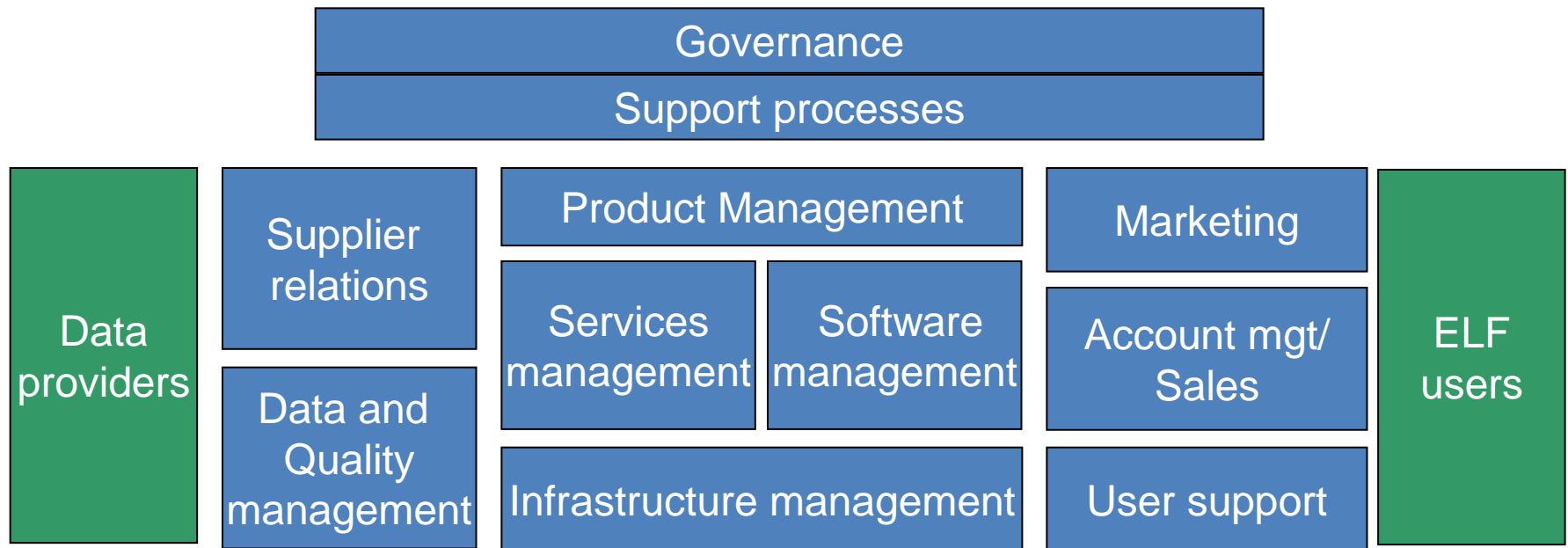


STRATEGIC ACTIONS

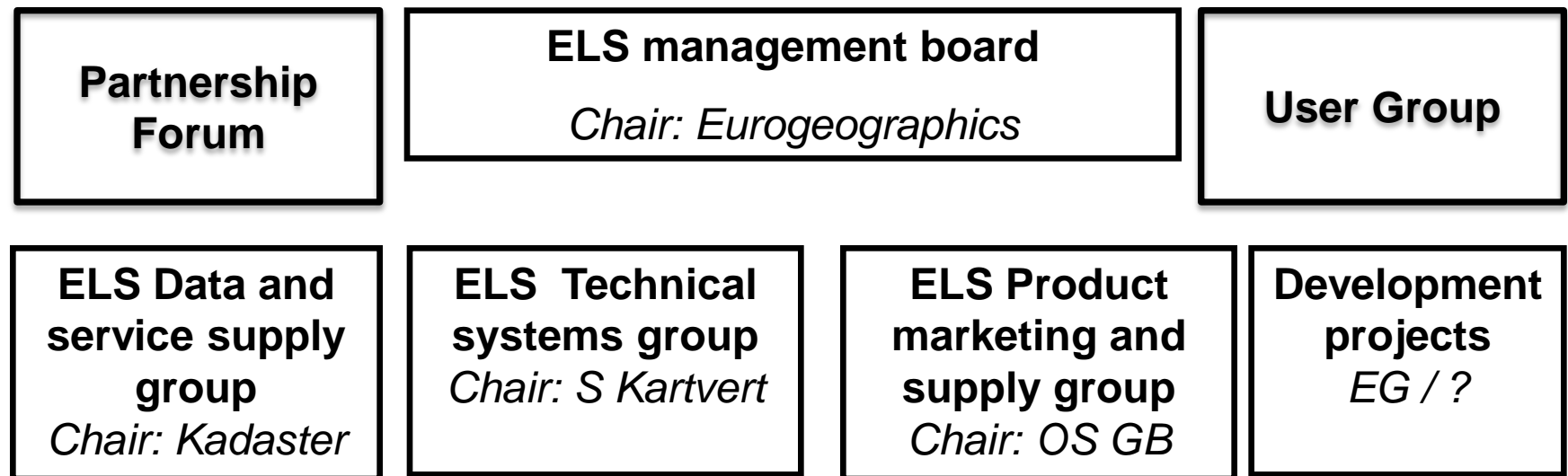


- COMMUNICATION
- SHOWCASE
- OPERATIONAL SERVICE
- DATA CONTENT
- FINANCIAL PLAN
- MARKET OFFERING
- PARTNERSHIP
- CAPACITY BUILDING / KNOWLEDGE EXCHANGE

Proposal: *Activities in Running a service*



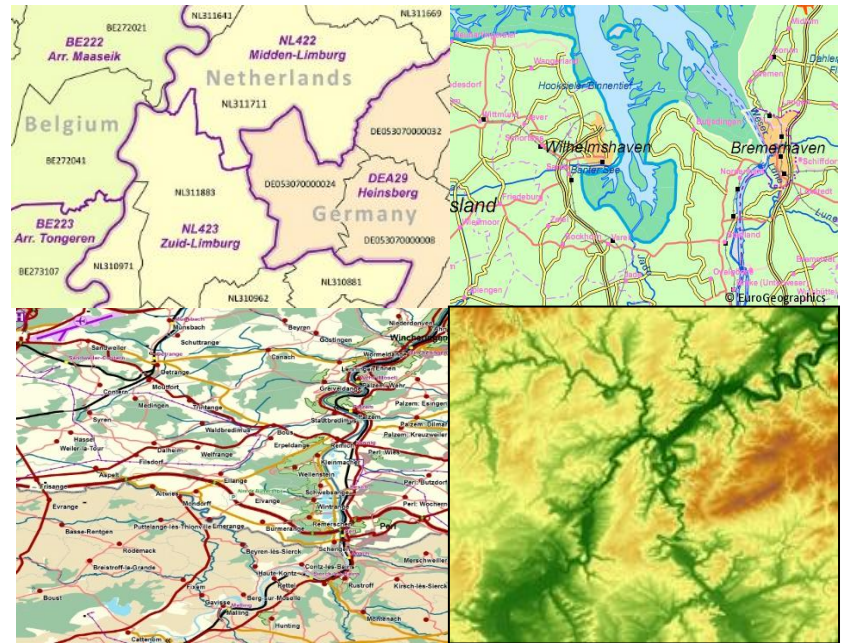
Proposal: Governance Structure



Note: the Governance structure serves to advise Eurogeographics on the strategic aspects of ELF, involving the relevant partners. This is NOT and Operational management structure. Development projects are not in the operational structure but are managed from the management board.

Data Content

- A European location Service is about the data content – this is all about getting harmonised NMCA data to pan-European users.
- Our intent is to provide full coverage across the whole of geographic Europe (not just the EU 28).
- The project will initially achieve some coverage only
- A clear programme for the inclusion of others will be developed. This must be a prioritised list of content with a timeline.



Develop a robust ELS / Market offering

- Critical few NMCA members to deliver the services
- Pick a few, critical users and market partners to develop solutions and offerings:
 - Value Added Resellers
 - Application Developers
 - EU Institutions
- Aim to develop minimum viable products / services

Partnership

- EuroGeographics cannot deliver this itself
- Must work with others to help make this happen:
 - NMCAs to deliver content
 - the EC to help them achieve their goals (important for securing funding).
 - Working with the private sector to deliver solutions to the market - developing a few VAR partners
 - And with academic partners to develop research tools of the access to this data.



Capacity Building / Knowledge Exchange

- To share our experience with others.
- Capacity building with NMCAS and non-member states
- To develop SME / operational framework
- Signals our desire to help deliver compliant cross-border, pan-European geospatial data,
- There is also scope to assist international development.



The Future: EuroGeographics



“EuroGeographics and its members are working to secure the long-term future of this unique and powerful source of geospatial information by ensuring that it will meet market need for authoritative reference data.”

abigail.page@eurogeographics.org

www.eurogeographics.org

www.elfproject.eu



Your Turn!

- What key learning from the existing products can input into ELS?
 - Process, opportunities to be “Learner”?
 - Coverage issues
 - User feedback
 - ?

