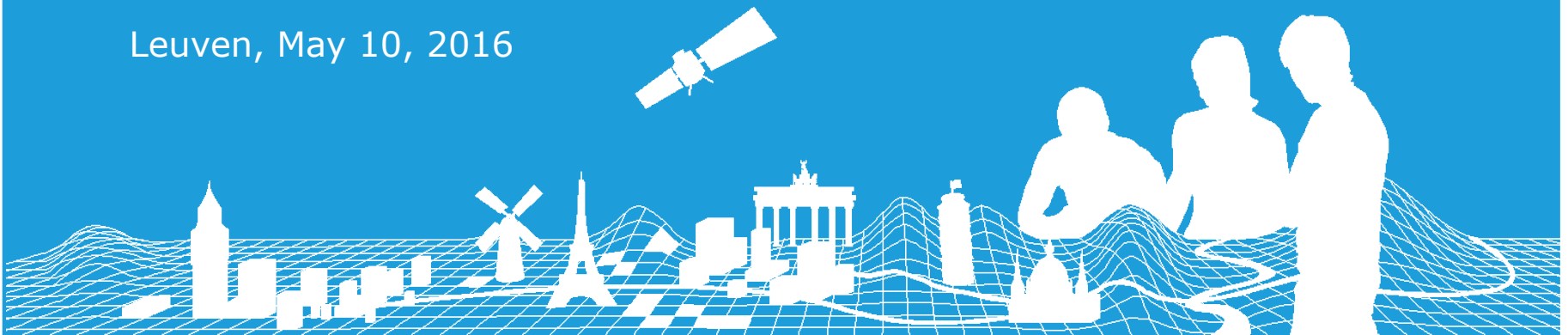


The Future of European Location Services *Data supply and Quality Control*

Martin Salzmann
Netherlands' Cadastre, Land Registry and Mapping Agency (Kadaster)

Leuven, May 10, 2016



Kadaster helping ELF or ELF helping Kadaster..?



Nature, geography and human activity do not stop at national borders. To stimulate further development and healthy economic growth in Europe, it is necessary to connect and combine the available local information sources beyond national borders. Transparency in property transactions, crime fighting, disaster response and prevention all require cross-border information for cross-border decision making. Read about Kadaster's commitment to encourage data exchange at the European level in this special edition of Abroad.

EU eGovernment Action Plan 2016-2020

Accelerating the digital transformation of government



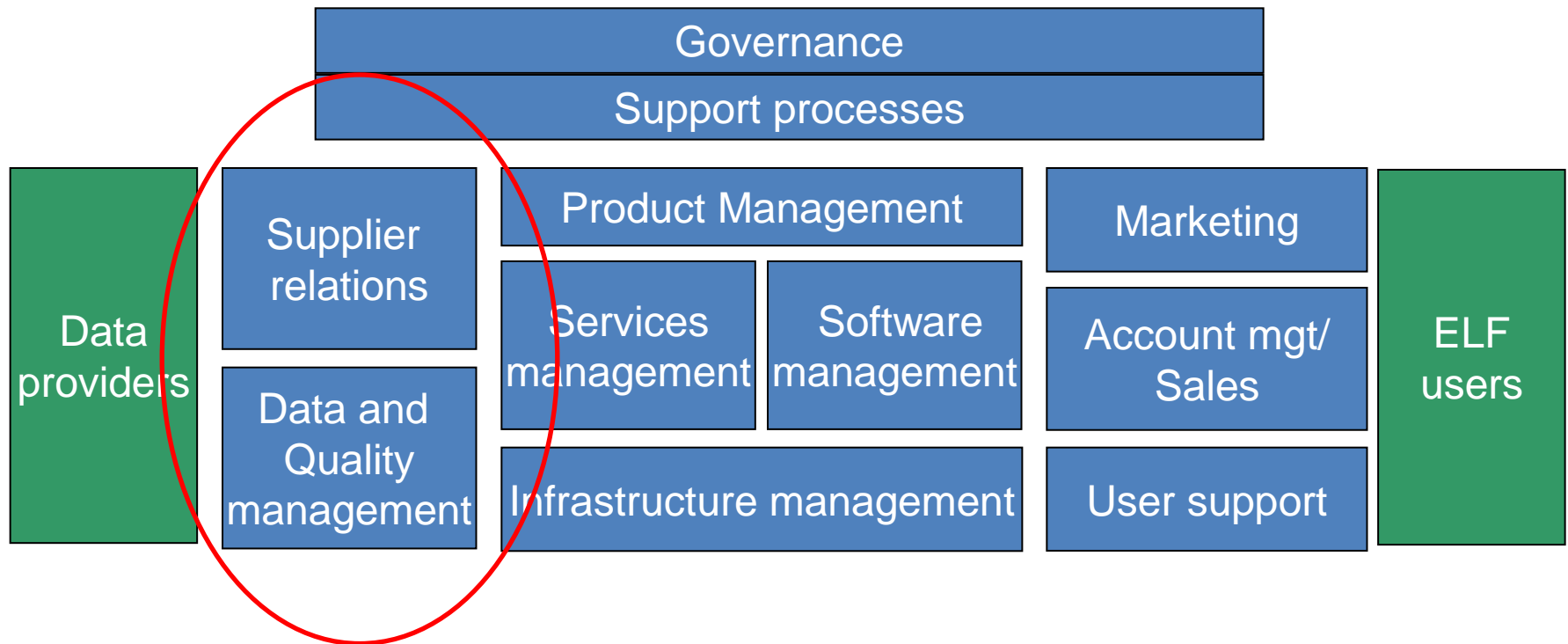
By 2020, public administrations and public institutions in the European Union should be open, efficient and inclusive, providing borderless, personalised, user-friendly, end-to-end digital public services to all citizens and businesses in the EU. Innovative approaches are used to design and deliver better services in line with the needs and demands of citizens and businesses.

(19.04.2016)

Running an operational service

Supplier relations

Data and quality management



Activities and partners involved

- Data specifications management
- Quality management
(validation is decentralized)
- Quality Improvement
- Supplier relations



Bundesamt
für Kartographie
und Geodäsie

kadaster



Regional coordinators

Suppliers

YOU!

THE MAPS OF TOPOGRAPHIC EUROPE



EuroGeographics

CONNECTING YOU TO THE
AUTHORITATIVE GEO-INFOR
FRAMEWORK FOR EUROPE

Risks and Issues

THE MAPS OF TOPOGRAPHIC EUROPE

- Coverage
- Shared effort by all members!



Commitment and capabilities

- Opportunity is now
- Online accessibility is key
- Complicated but not complex

The glass is (more than) half full!

