

The INIS Geoportal of Romania version 2.0 openness to the users' needs

14 May 2020

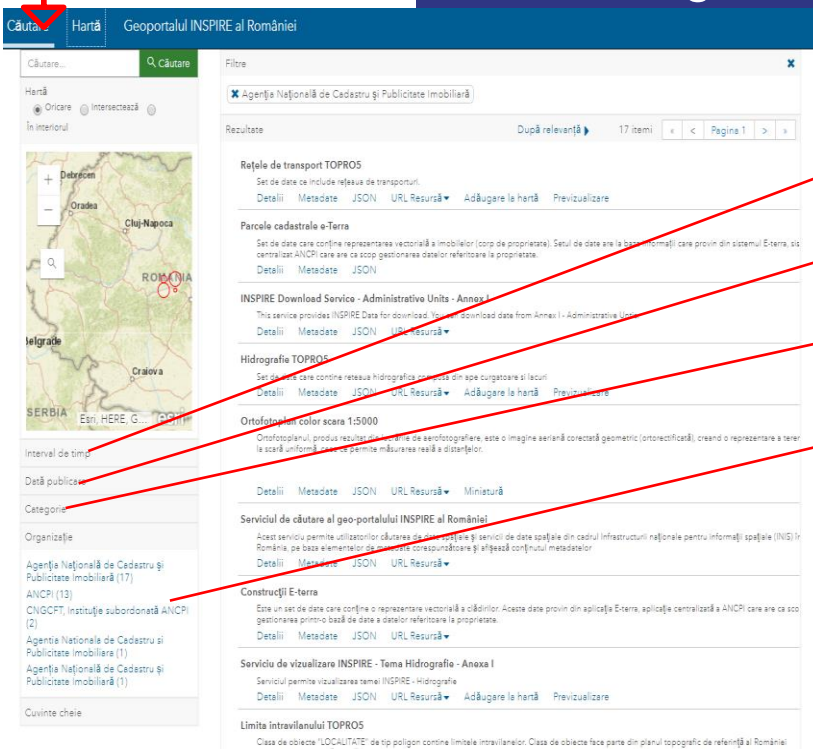


- Change of graphical interface;
- Improving the search section in metadata documents;
- Adding of map section – view and explore the resources provided by INIS members;
- Development of spatial data download apps provided by ANCPI;
- Improving the existing apps
- What has been taken over from version 1.0:
 - ✓ View and search apps (Cadastral parcel Viewer, INIS Viewer);
 - ✓ Coordinate transformation app;
 - ✓ Information about INSPIRE, INSPIRE roadmap and INIS Council members;

Search section in metadata documents

Criteria for filtering :

- time interval,
- publication date,
- INSPIRE theme,
- organization - the owner of the spatial data or the area of coverage of the spatial data)

Căutare... **Hartă** Geoportalul INSPIRE al României

Filtre

Agenție Națională de Cadastru și Publicitate Imobiliară

Rezultate După relevanță 17 itemi

Rețele de transport TOPROS
Set de date care include rețeaua de transporturi.
Detalii Metadate JSON URL Resursă Adăugare la hartă Previzualizare

Parcelle cadastrale e-Terra
Set de date care conține reprezentarea vectorială a imobilelor (corp de proprietate). Setul de date are la bază informații care provin din sistemul E-Terra, sistem centralizat ANCPI care are ca scop gestionarea datelor referitoare la proprietate.
Detalii Metadate JSON

INSPIRE Download Service - Administrative Units - Anexa I
This service provides INSPIRE Data for download. It is a set of download data from Annex I - Administrative Units.
Detalii Metadate JSON URL Resursă

Hidrografie TOPROS
Set de date care conține rețeaua hidrografică derivată din ape curgătoare și lacuri.
Detalii Metadate JSON URL Resursă Adăugare la hartă Previzualizare

Ortofotoplan color scara 1:5000
Ortofotoplanul, produs rezultat din proces de aerofotogrametrie, este o imagine aeriă corectată geometric (ortorectificată), creând o reprezentare a teren la scară uniformă, care permite măsurarea reală a distanțelor.
Detalii Metadate JSON URL Resursă Miniatură

Serviciul de căutare al geo-portalului INSPIRE al României
Acest serviciu permite utilizatorilor să acceseze date spațiale și servicii de date spațiale din cadrul Infrastructurii naționale pentru informații spațiale (INSI) în România, pe baza elementelor de identificare, descriere și acces la informații.
Detalii Metadate JSON URL Resursă

Construcții E-Terra
Este un set de date care conține o reprezentare vectorială a clădirilor. Aceste date provin din aplicația E-Terra, aplicație centralizată a ANCPI care are ca scop gestionarea primărilor de date a datelor referitoare la proprietate.
Detalii Metadate JSON URL Resursă

Serviciu de vizualizare INSPIRE - Tema Hidrografie - Anexa I
Serviciul permite vizualizarea temei INSPIRE - Hidrografie.
Detalii Metadate JSON URL Resursă Adăugare la hartă Previzualizare

Limite intravilanului TOPROS
Clasa de obiecte "LOCALITATE" de tip poligon conține limitele intravilanului. Clasa de obiecte face parte din planul topografic de referință al României.

Interval de timp:

Data publicării:

Categorie:

Organizație:

Agenție Națională de Cadastru și Publicitate Imobiliară (17)

ANCPI (13)

CNGCPT, instituție subordonată ANCPI (2)

Agencia Nacional de Cadastru si Publicitate Imobiliare (1)

Agencia Nacional de Cadastru si Publicitate Imobiliare (1)

Cuvinte cheie:

Interval de timp al
resursei - data creării și
a ultimei revizii

Data publicării

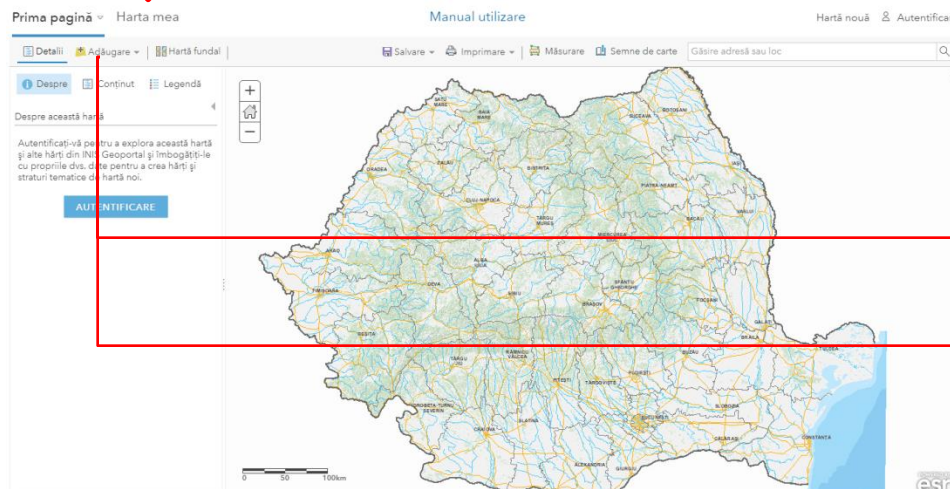
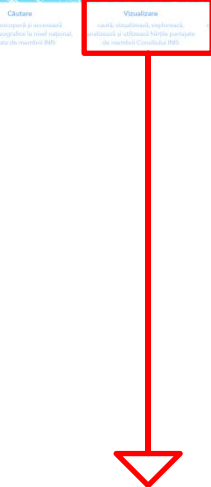
Tema INSPIRE

Organizație

Maps section– features

Creating your own map

- Background map - TopRO5, Orthophoto 2005, 2008, 2009, 2010, 2015-2017, 2018 editions
- Add:
 - network services : OGC WMS, OGC WMTS, OGC WFS, KML, GEORSS, CSV
 - Local datasets, such as:
 - CSV or TXT files containing addresses or coordinates
 - GPX Files (GPS Exchange Format)
 - GeoJSON Files



Adăugare strat tematic din fișier

Localizați fișierul pe care doriți să îl importați.

- CSV or TXT files with optional address, place or coordinate locations (comma, semi-colon or tab delimited)
- GPX (Format de schimb GPS)
- GeoJSON (open standard features)

Fișier: Nu ai

Adăugare strat tematic de pe Web

Ce tip de date referiți?

Un serviciu Web WMS OGC

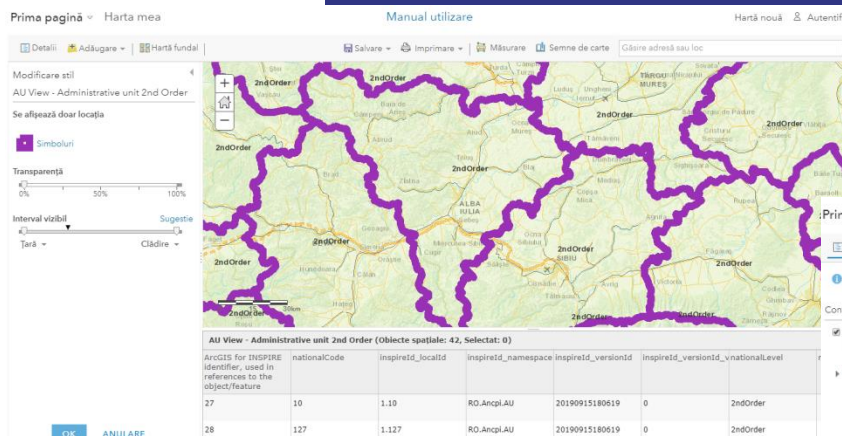
URL:

☐ Utilizare ca hartă fundal

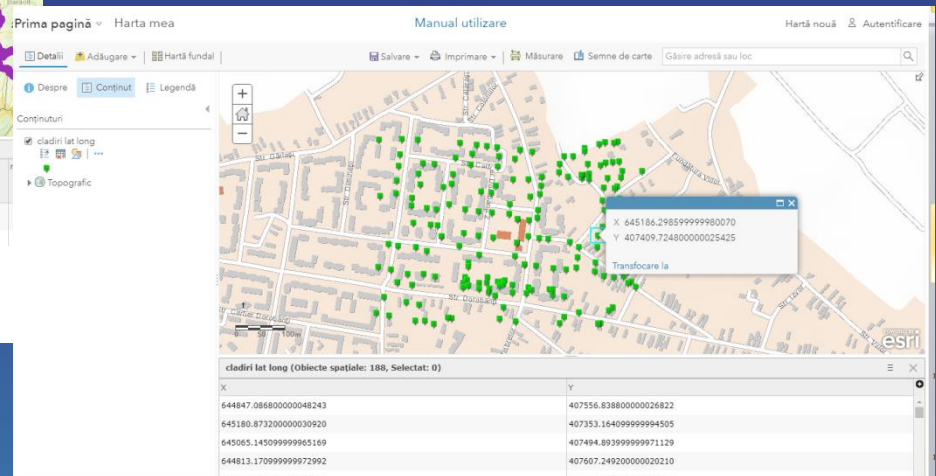
Map Section – features Creating your own map

The possibility to:

- change ad-hoc symbology of data sets added by choosing the style and field (s) used in the classification
- define information windows that contain information from the attribute table of the added datasets



Adăugare serviciu WMS AU, simbolizare și afișare atribute



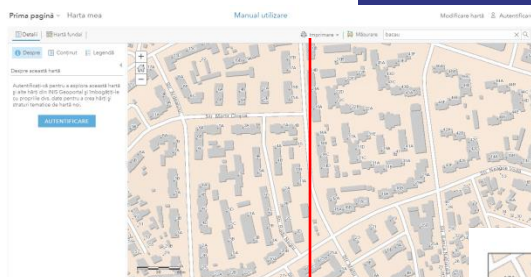
Adăugare fișier CSV, simbolizare și afișare atribute

Map Section– features

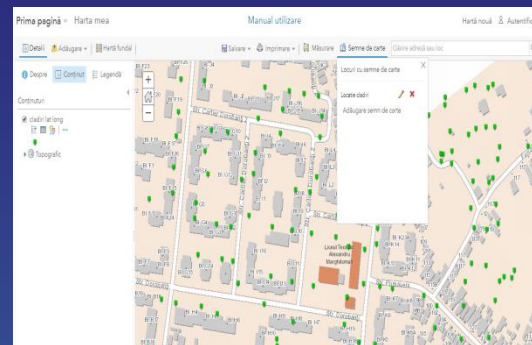
Creating your own map

The possibility to:

- define the transparency of the layers added from the map
- add map notes (point / line / polygon)
- create bookmarks
- print the map

















Tipărire format pdf



Adăugare semne de carte

Explorati Aplicatiile din Geoportalul INIS

 <p>Vizualizare</p> <p>Imobila</p>	 <p>Descărcare TopRO50</p> <p>Descărcare seturi de date To...</p>	 <p>Descărcare TopRO100</p> <p>Descărcare seturi de date To...</p>	 <p>Vizualizare</p> <p>Rețele utilități</p>
 <p>Descărcare MNT</p> <p>Descărcare MNT</p>	 <p>Descărcare LAKI2 Ortofoto</p> <p>Descărcare seturi de date LA...</p>	 <p>Descărcare LAKI2 MNT</p> <p>Descărcare seturi de date LA...</p>	 <p>Descărcare</p> <p>Limite administrative</p>
 <p>Vizualizare Sectoare Cadastrale</p> <p>Vizualizare sectoare cadastrale</p>	 <p>Vizualizare TopRO 5</p> <p>Vizualizare TopRO5</p>	 <p>Vizualizare perimetre construite</p> <p>Vizualizare perimetre constru...</p>	 <p>Vizualizare adrese</p> <p>Vizualizare Adrese</p>
 <p>Vizualizare</p> <p>INIS Viewer</p>	 <p>Transformare</p> <p>Coordonate</p>		

ANCPI data download applications

The data is downloaded based on an open data license - specific for each data set - OGL ROU 1.0

Data available for downloading:

- **TopRO50** (reference topographic data for scale 1: 50,000)
- **TopRO100** (reference topographic data for scale 1:100.000)
- **MNT** – numerical model of the terrain with resolution of 20x20 m
- **LAKI2 ORTHO** - orthophoto images with a precision of 20 cm on an area of 10,000 km²
- **LAKI2 MNT** – with a resolution of 1x1m for a 10.000 km² area

ANCPI data download apps Functions

- Predefined download by administrative units
- Dynamic download by cutting after an interactively drawn area
- Dynamic download by cutting after a contour - by uploading an archive containing shape data set in the national coordinate system

ANCPI data download apps

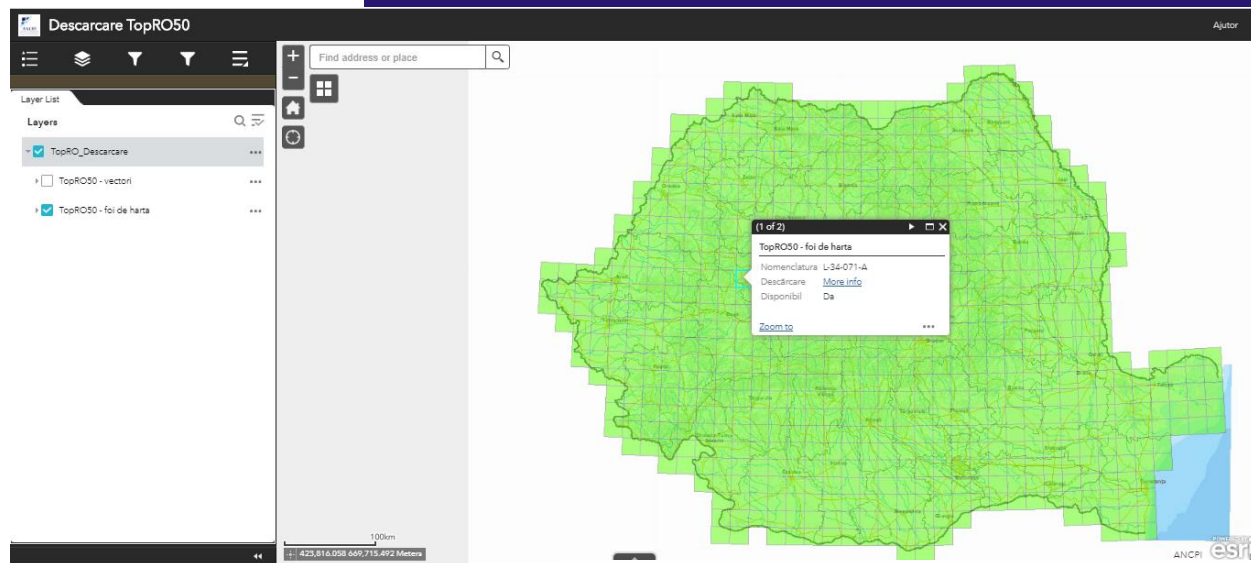
Data format

Format data sets provided by ANCPI :

- Predefined download:
 - ✓ **GDB** for vectors with cartographic representation ;
 - ✓ **GRID** for the elevation;
 - ✓ **MrSID** for Ortofoto.
- Dynamic download:
 - ✓ **GDB, SHP, DWG, DGN** for vectors;
 - ✓ **GRID, ERDAS IMAGINE, TIFF, GIF, JPEG, JPEG 2000, BMP, PNG** for rasters.

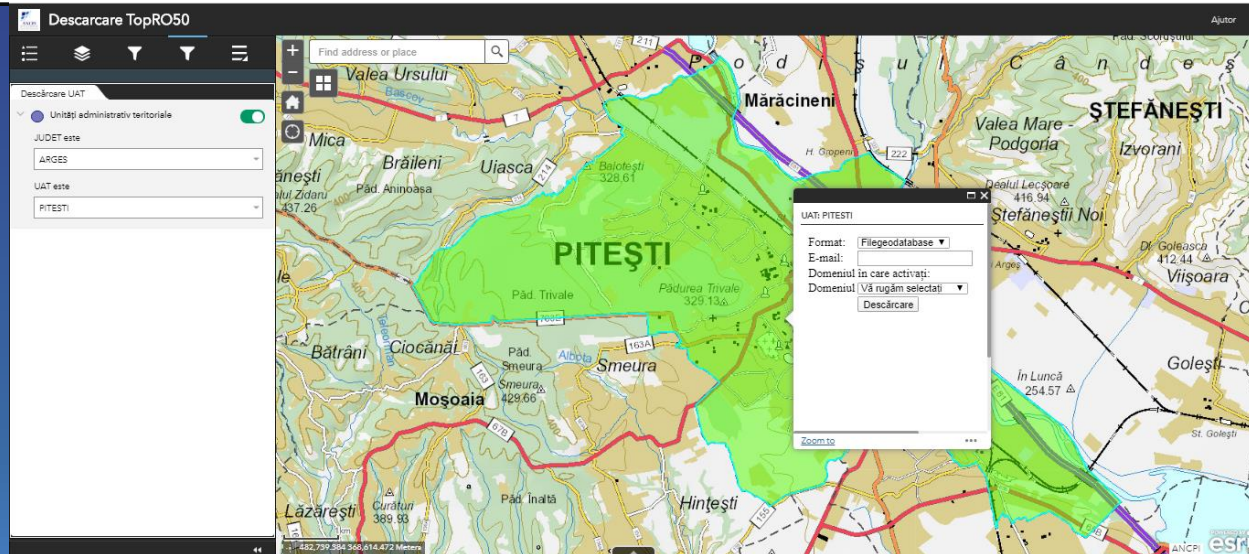
In the case of topographical maps, PDF sheets are also available for download.

Download TopRo50 app

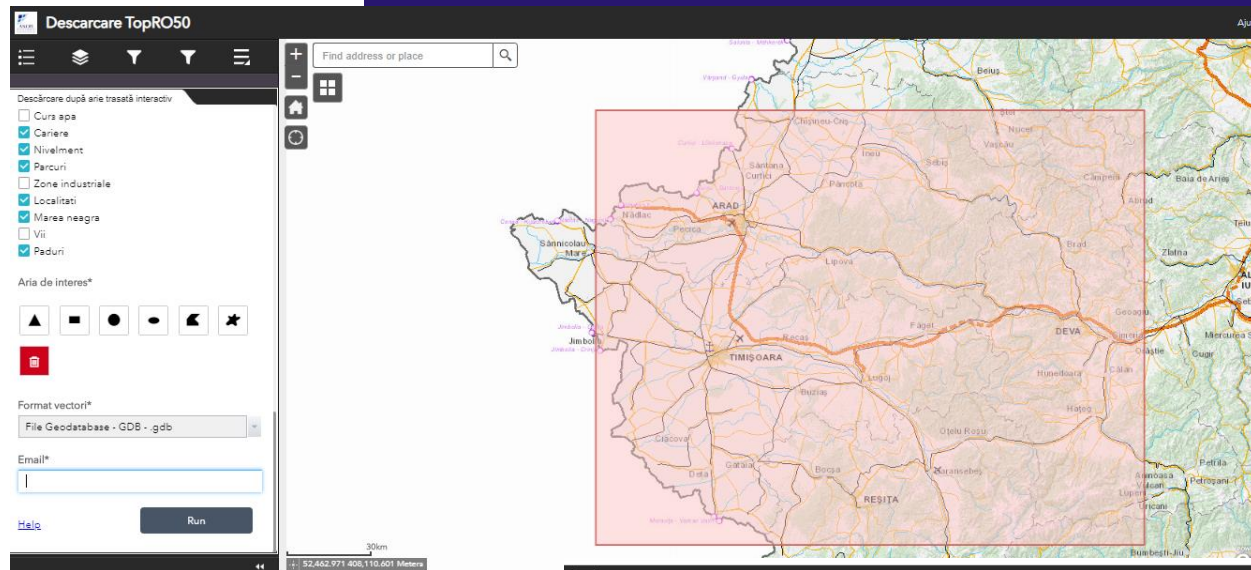


Download map sheets

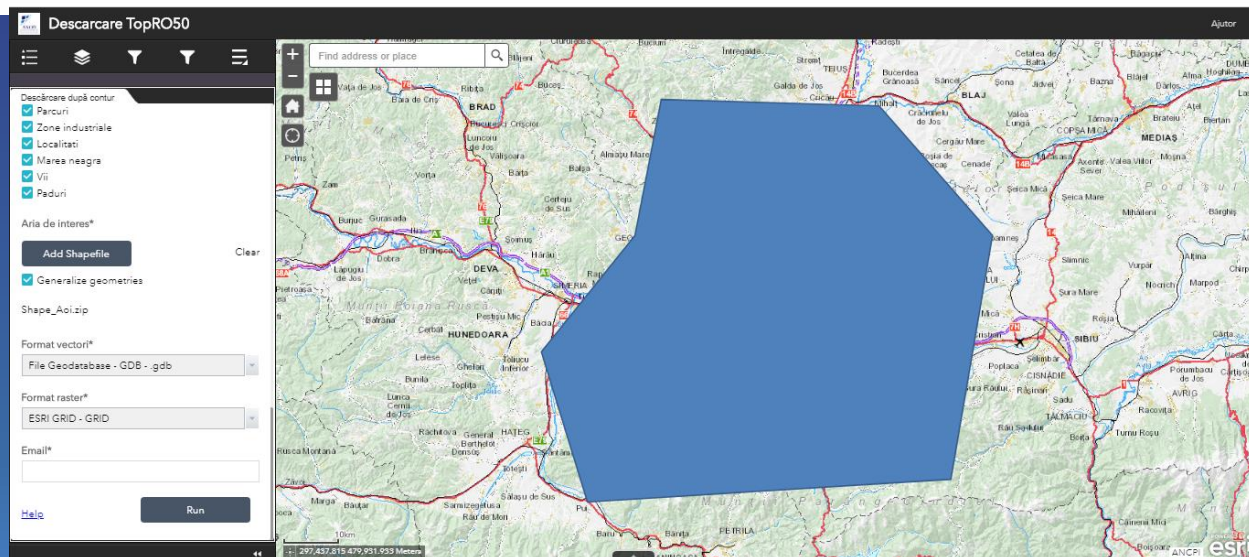
Predefined
download



Download app TopRo50



Dynamic download

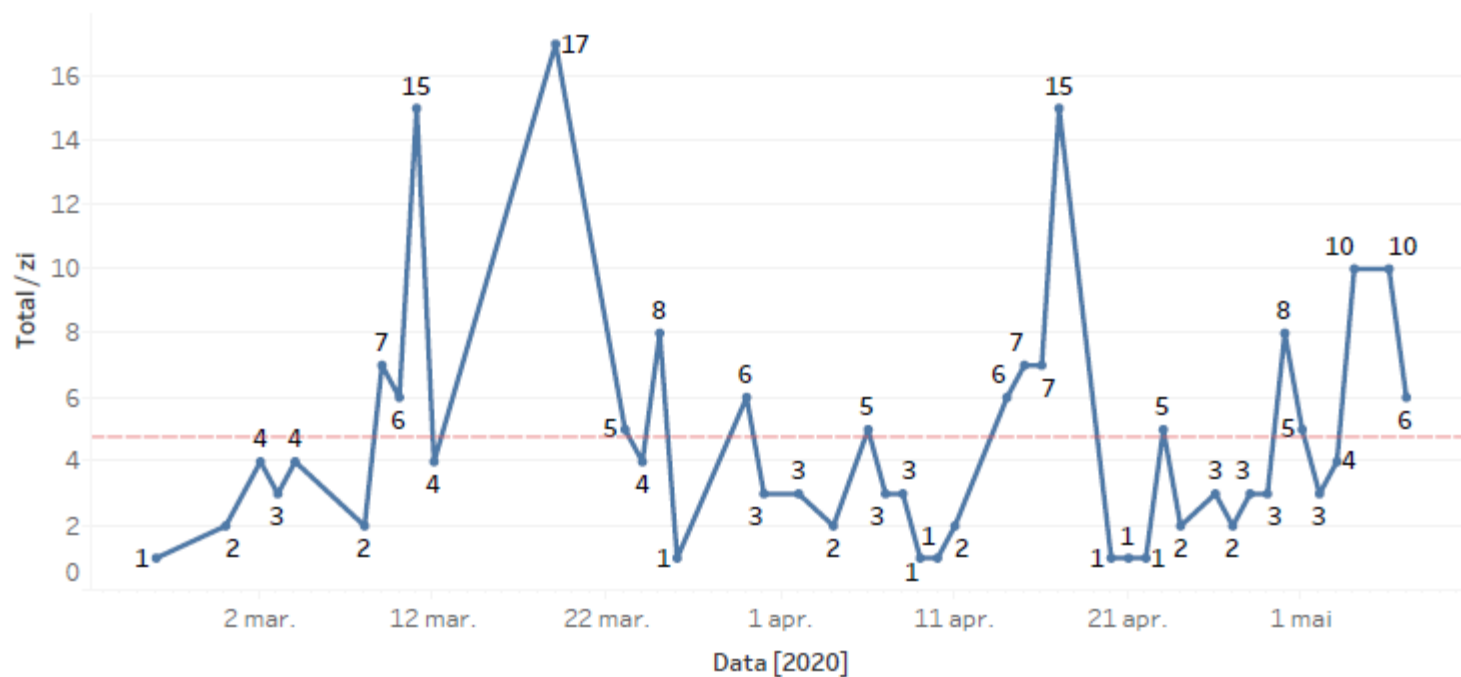


Dynamic
download - by
Shapefile

Download apps usage report

Total descărcări / zi. Tendința

Actualizat la: 08.05.2020 09:00:33

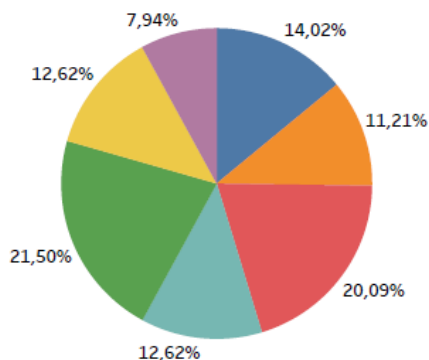


The trend of Number of Records for DATA DESCĂRCARE Day. The view is filtered on sum of Number of Records, which keeps all values.

Download apps usage report

Repartiția pe domenii din total descărcări [%]

Actualizat la: 08.05.2020 09:00:33

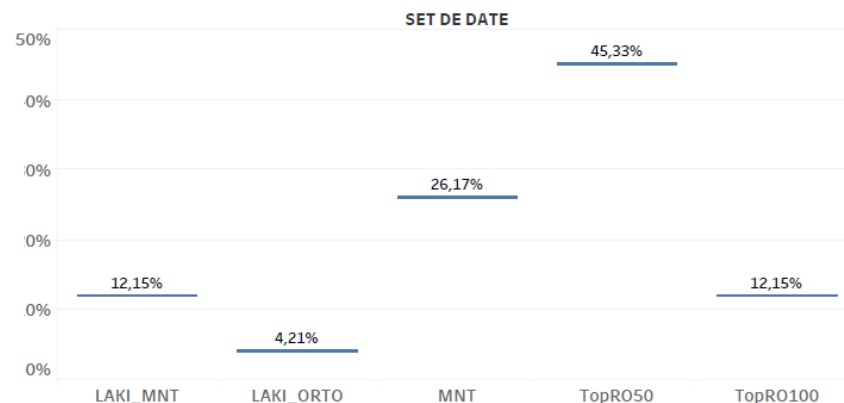


DOMENIU

- Administrație publică
- Arhitectura
- Cadastru
- Cartografie
- Geografie
- Proiectare
- Topografie

Repartiția pe seturi de date din total descărcări[%]

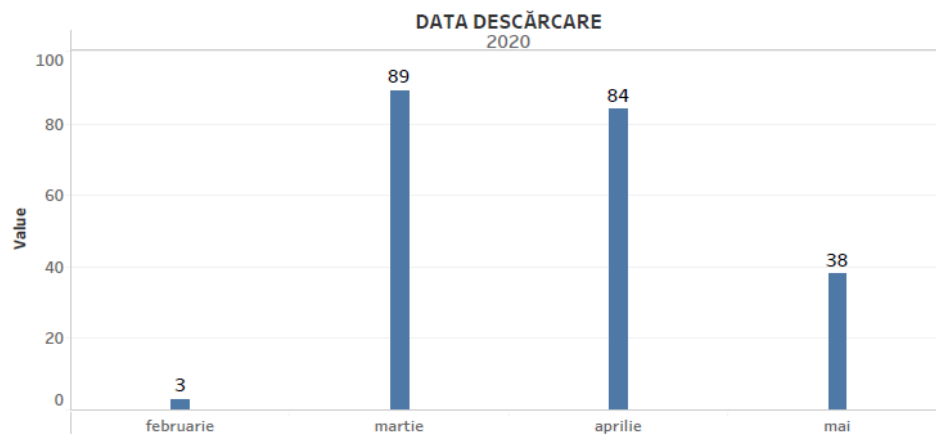
Actualizat la: 08.05.2020 09:00:33



si Number of Records for each SET DE DATE. Percents are based on each row of the table.

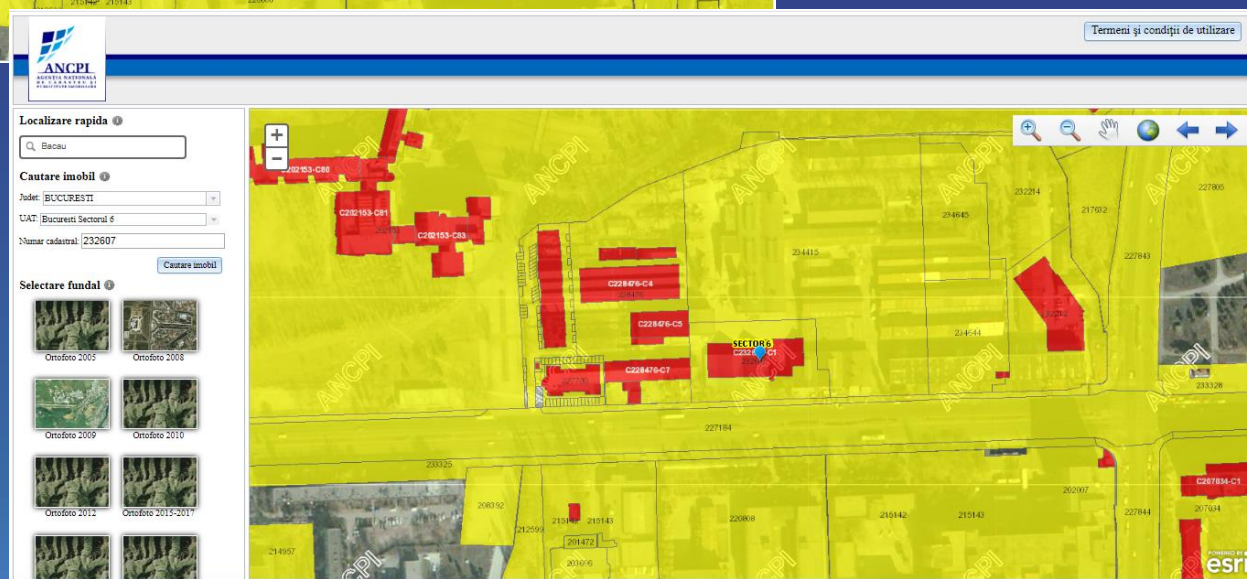
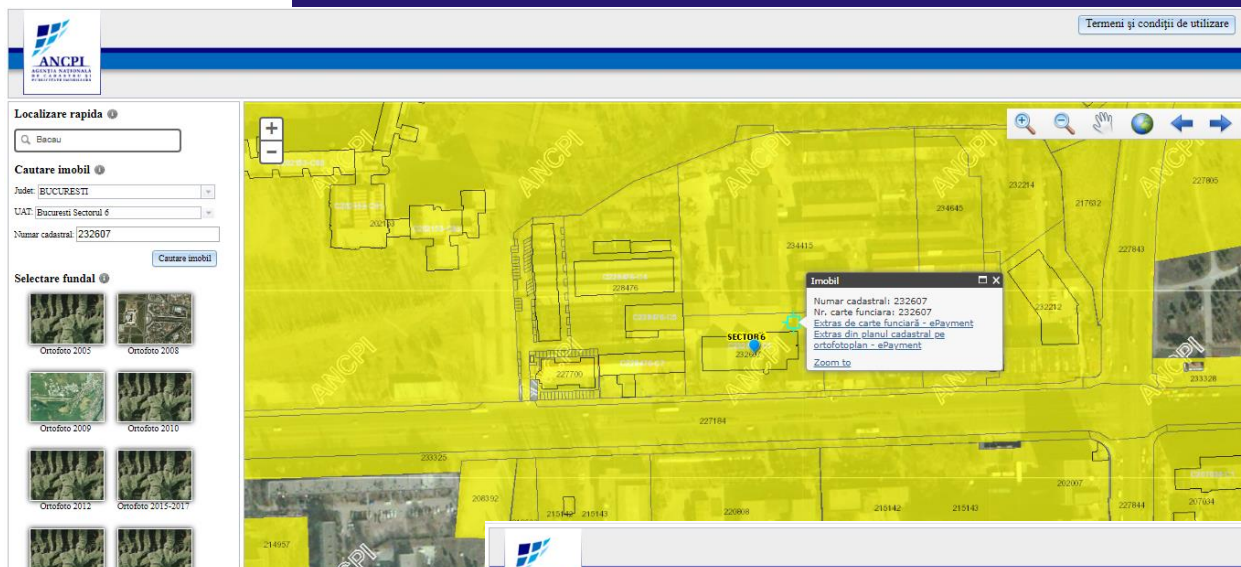
Total descărcări pe lună

Actualizat la: 08.05.2020 09:00:33

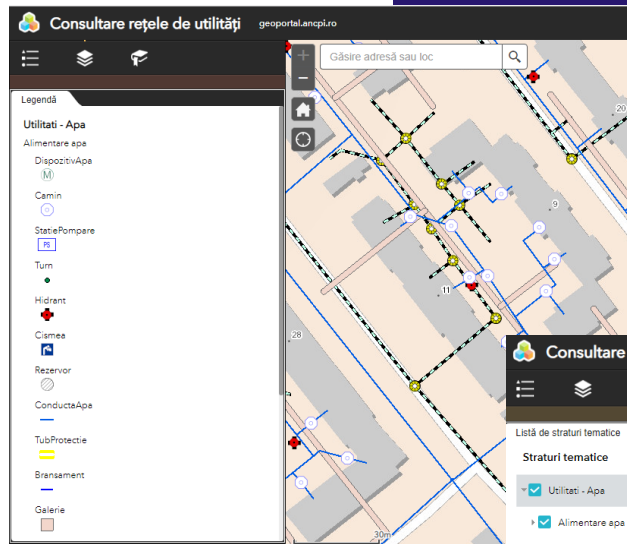


Number of Records for each DATA DESCĂRCARE Month broken down by DATA DESCĂRCARE Year.

The Cadastral parcel View App

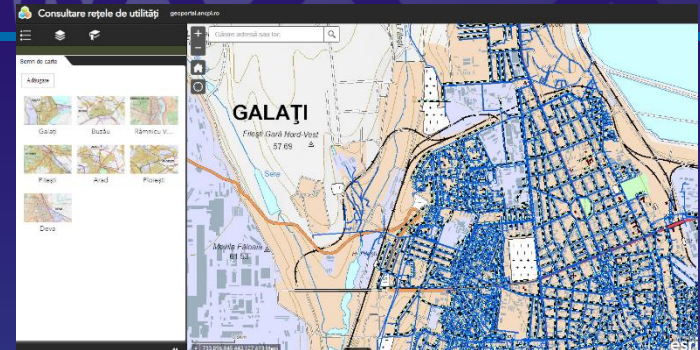


Public utility services View app

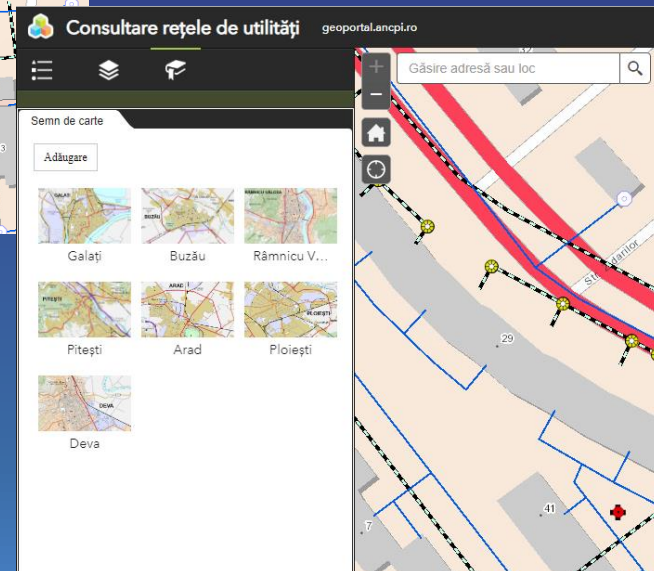
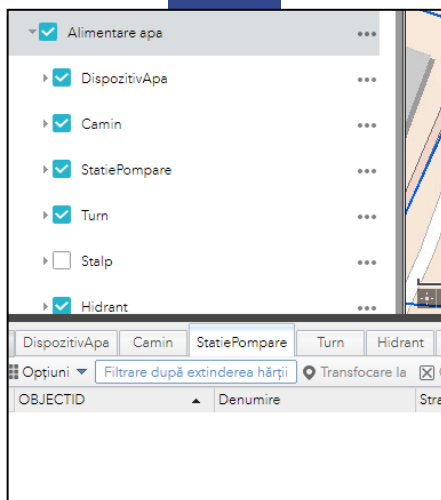
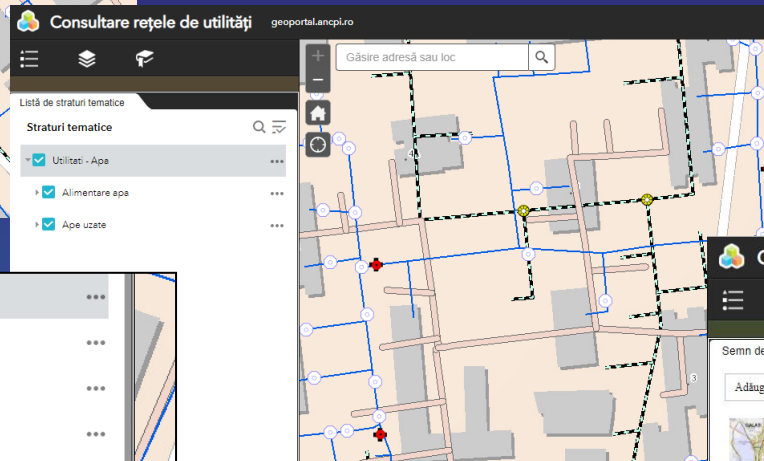


The legend

- water supply
- wastewater



Thematic layers

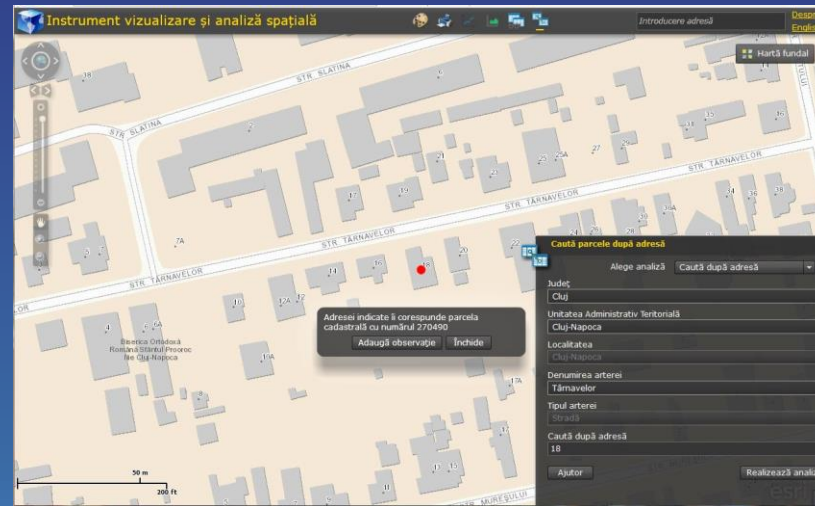
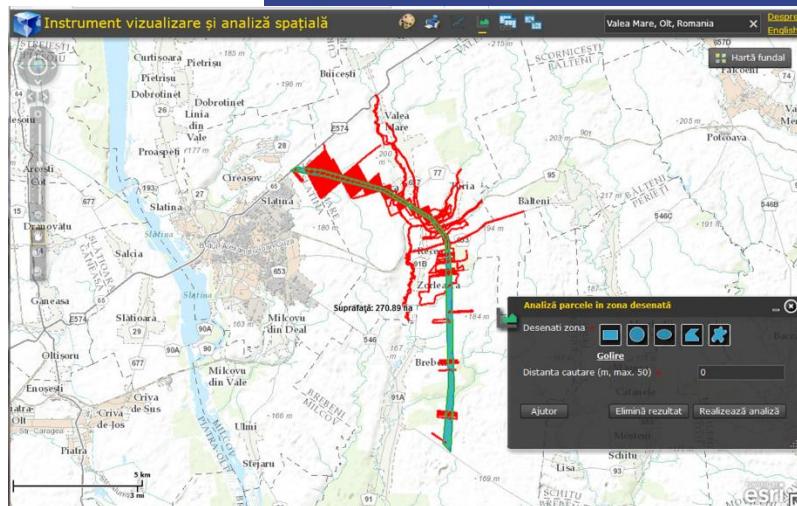
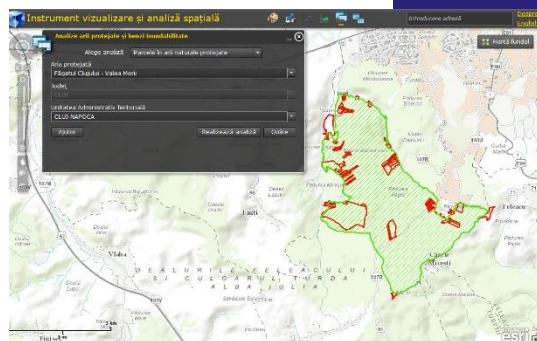


Settlements

The INIS Viewer App

Allows spatial analysis:

- Analysis of parcels, buildings in protected areas, floodplains
- Analysis of protected areas, floodplains related to parcels, buildings
- Search parcel by address and vice-versa
- Identification of parcels in the area of interest and in the drawn area



Thank you!

www.geoportal.gov.ro