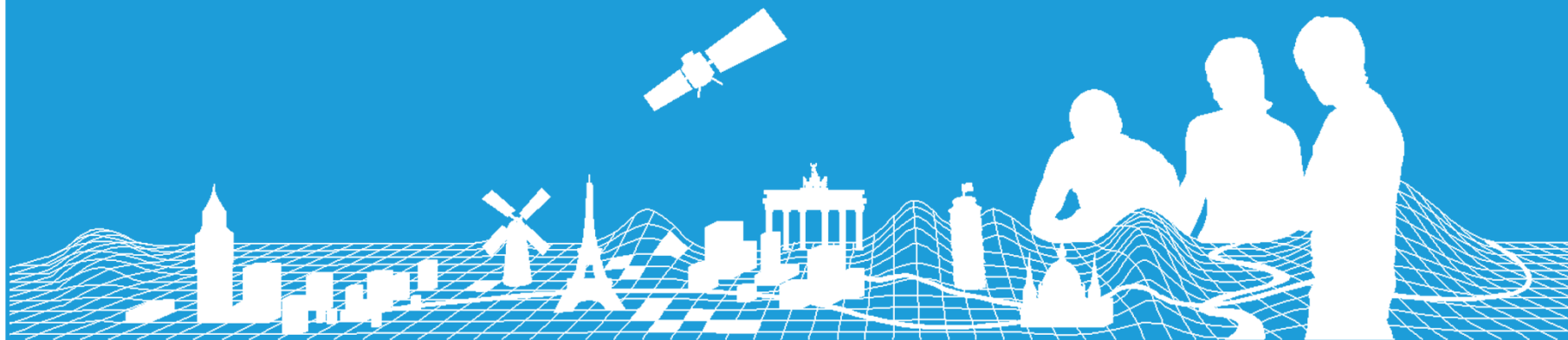


Cadastre & LR Knowledge Exchange Network

EuroGeographics Update - Beyond Limits

Dave Lovell, EuroGeographics Secretary General and Executive Director

20.03.15



Topics



- Introduction to EuroGeographics
- European Location Framework
- Knowledge Exchange Networks
- UN-GGIM: Europe
- Partnerships
- EuroGeographics Team



EuroGeographics Membership

60 members

46 European countries

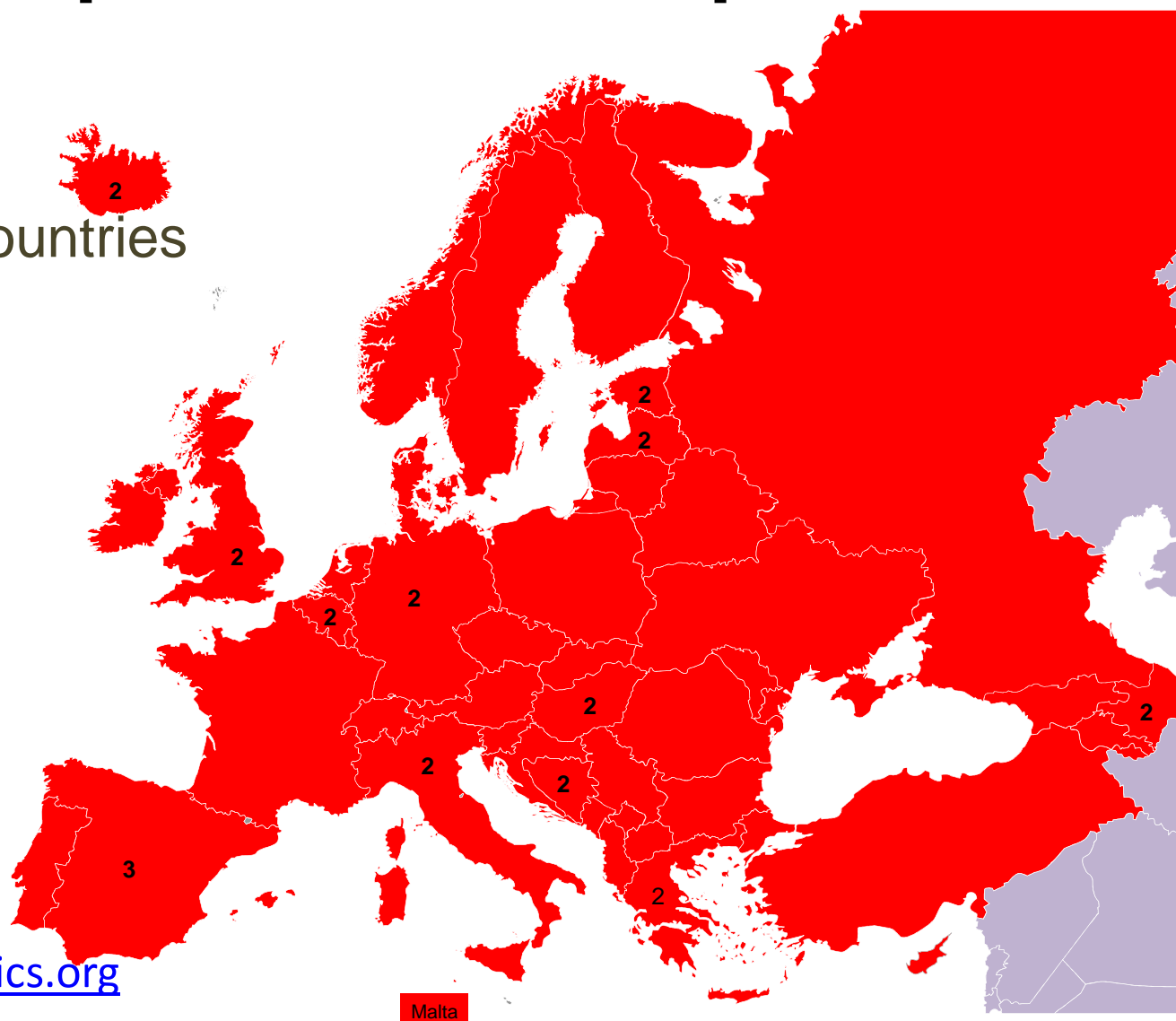
-  Full membership
-  Out of scope

Rue du Nord 76
Noordstraat 76
1000 Brussels
Belgium

www.eurogeographics.org



CONNECTING YOU TO THE
**AUTHORITATIVE GEO-INFORMATION
FRAMEWORK FOR EUROPE**



The European Location Framework

- **Articles of Association**
- **Medium Term Plan**
- **Strategy 2014 - 2020**
- **Annual Operating Plans**

Strategic Objectives

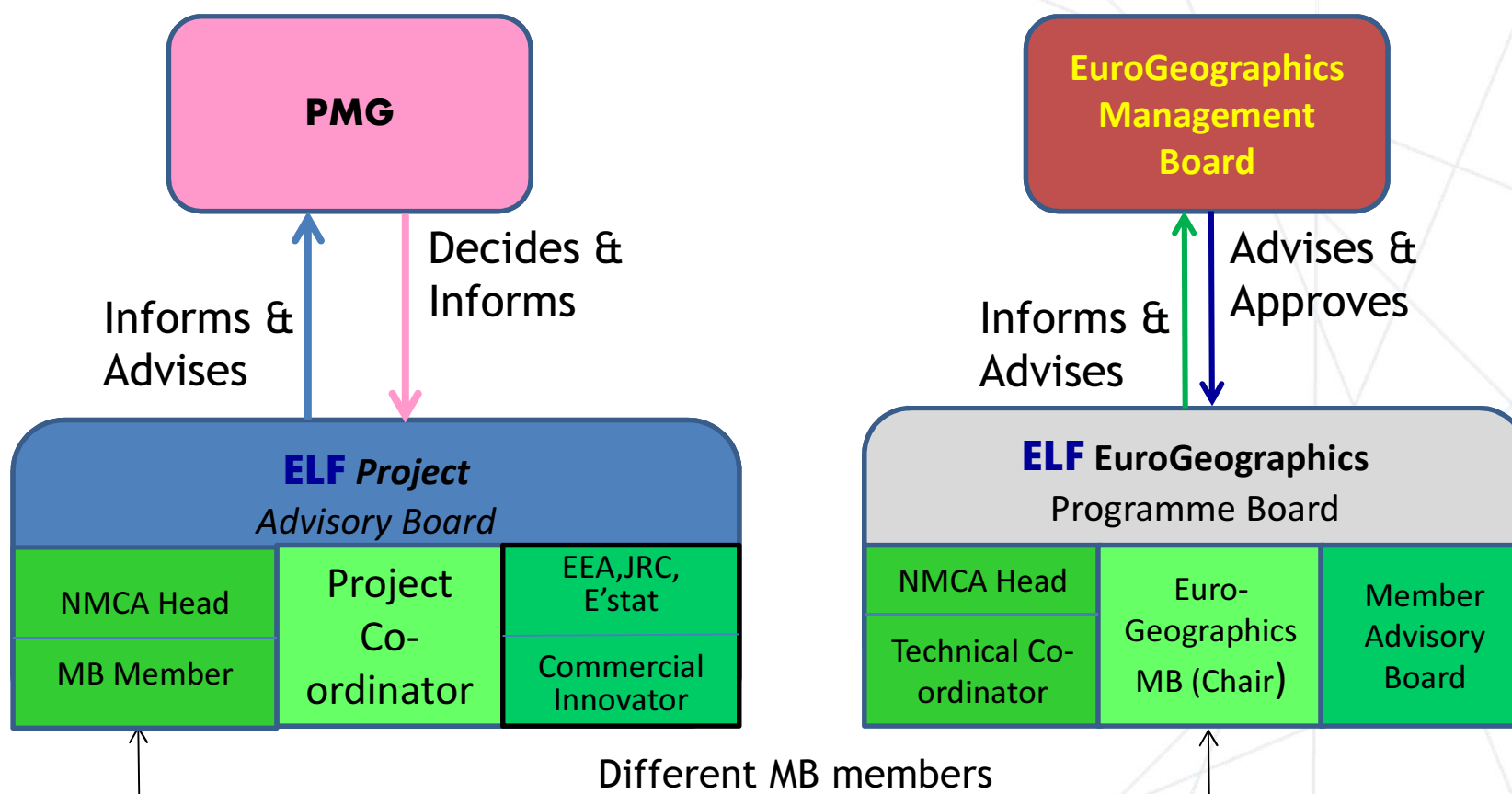
- 1) Provide the voice of our members
- 2) Develop the network of members
- 3) **Deliver an operational ELF to support realisation of the ESDI**
- 4) **Facilitate access to members' data and expertise**
- 5) Grow our network of members
- 6) Ensure that the association continues to develop its role and has a sustainable future

Achieve interoperability of our Members' national land and geographic information, **including the realization of a European Location Framework** to provide Europe and the EU with a valuable information asset to support its long term strategies;

A €13 million investment

- ★ A technical environment developed by leading NMCAs
- ★ Pricing and Licensing respecting national conditions prepared by NMCAs (if you charge for your data ELF charges for your data)
- ★ Hosting in a private NMCA Cloud
- ★ ELF Owned and Managed by EuroGeographics (EuroGeographics 'owned' and managed by you and for you)
- ★ ELF Service components provided by NMCAs (technical infrastructure, open-source platform, contract and licence management, sales marketing and customer support, etc)
- ★ Developed for you and by you to satisfy government, business and personal users and uses

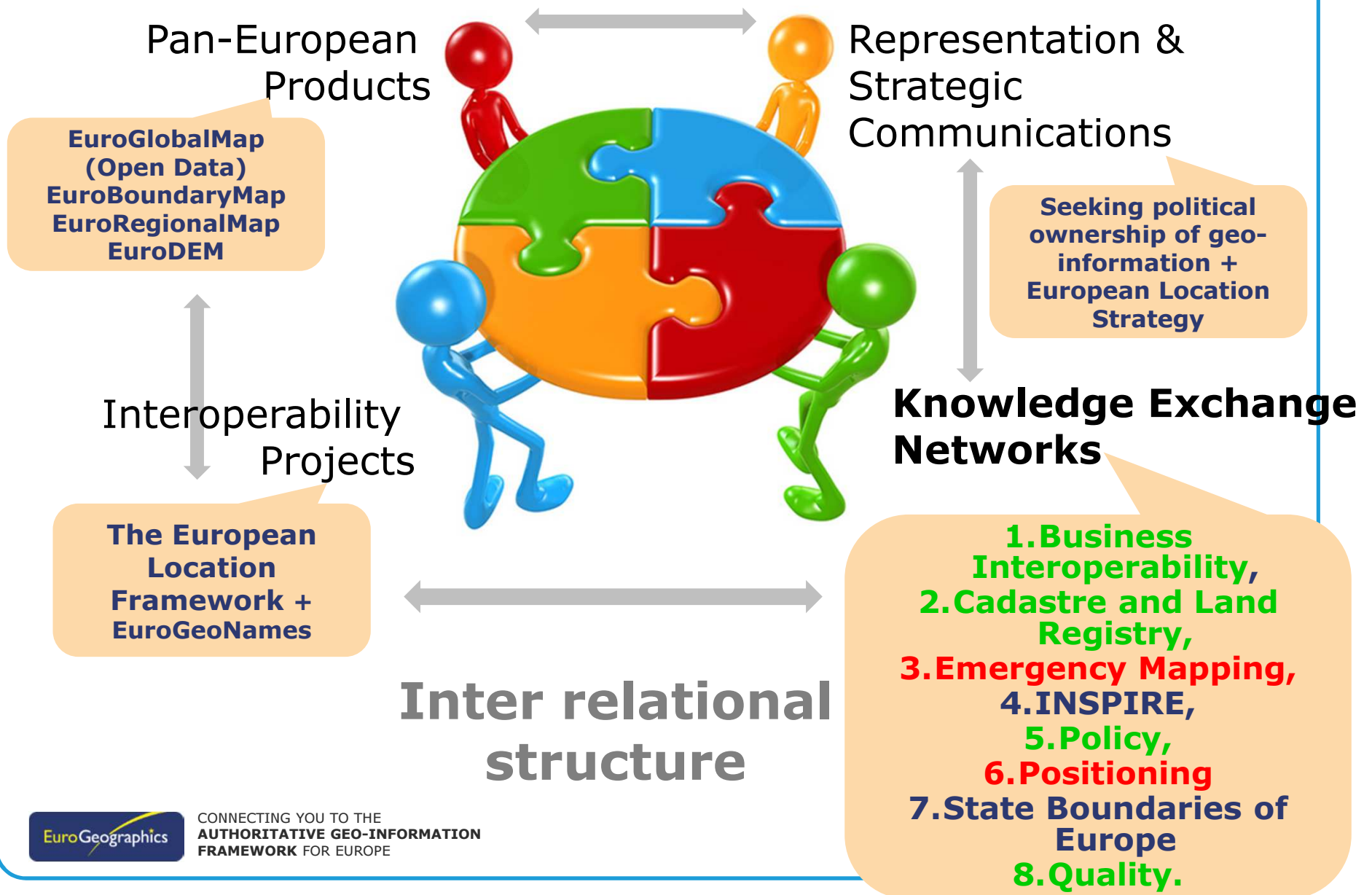
EuroGeographics ELF Management Structure



Current EuroGeographics issues

- ★ Ownership of the ELF Platform;
- ★ Business Model;
- ★ Business Case;
- ★ Branding – EuroGeographics Location Services;
- ★ Defining Operational Products and Services;
- ★ Organisational Set-up

EuroGeographics AISBL – Activities





UN-GGIM: EUROPE

UNITED NATIONS INITIATIVE ON
GLOBAL GEOSPATIAL
INFORMATION MANAGEMENT





UN-GGIM: Europe Executive Committee

Tomaz Petek, Peter ter Haar, Bengt Kjellson, Jacek Jarzabek, Antonio Arozarena, Andrei Tarnopolskiy
Dorine Burmanje, Hansjörg Kutterer, Kristian Møller, Ezio Bussoletti, Ass't to Mr Tarnopolskiy



UN-GGIM: EUROPE

UNITED NATIONS INITIATIVE ON
GLOBAL GEOSPATIAL
INFORMATION MANAGEMENT



UN-GGIM: Europe Work Plan

- **Work Group A, Core Data:** Increasing data interoperability and harmonisation by proposing core geospatial data which meets essential user needs
- **Work Group B, Data Integration:** Enabling integration of core geospatial data with other data in order to foster further usage



UN-GGIM: EUROPE

UNITED NATIONS INITIATIVE ON
GLOBAL GEOSPATIAL
INFORMATION MANAGEMENT



UN-GGIM: Europe Secretariat



UN-GGIM: EUROPE

UNITED NATIONS INITIATIVE ON
GLOBAL GEOSPATIAL
INFORMATION MANAGEMENT



Partnerships - EuroSDR



EuroGeographics Team



EuroGeographics

Working with you and for you,
Bigger and Stronger,
Recognised and Respected,
Delivering Programmes and Products,
Interesting past, Exciting Future!



CONNECTING YOU TO THE
AUTHORITATIVE GEO-INFORMATION
FRAMEWORK FOR EUROPE





**EuroGeographics
working with
members and
working with
others**

**Because together
we are stronger
and smarter,
more efficient
and more
effective.**

Thank you!

**Together,
we benefit
from each
other**

EuroGeographics

CONNECTING YOU TO THE
**AUTHORITATIVE GEO-INFORMATION
FRAMEWORK FOR EUROPE**



EuroGeographics

www.eurogeographics.org



<http://www.elfproject.eu/>



CONNECTING YOU TO THE
**AUTHORITATIVE GEO-INFORMATION
FRAMEWORK FOR EUROPE**

