

BIOGRAPHICAL NOTE

Gunnar Ersbo

Lantmäteriet | gunnar.ersbo@lm.se |

[Session Nº. 1](#) |

The Swedish real property register, geodata and
environmental information

Gunnar Ersbo is working as a Business
Developer at the unit of Cadastral services
support in Lantmäteriet Sweden.

Main area of expertise is cadastral services
and real property information.

He has 37 years of experience from working
in Lantmäteriet; earlier working areas has
included e.g. responsibility of Sweden's
national borders and different levels of
management.

PHOTO



BIOGRAPHICAL NOTE

Magdalena Andersson

Lantmäteriet | magdalena.andersson@lm.se |

Session Nº. 1 |

The Swedish real property register, geodata and
environmental information

Magdalena Andersson is working as a Business Developer at the unit of Real Property Information, Geodata in Lantmäteriet Sweden.

Main area of expertise is real property information as well as marine information in relation to the real property register.

She has a long experience from working in Lantmäteriet; earlier working areas has included e.g. information security and project management in St Petersburg, Russia.

She holds a B.S. in Systems Science and a degree in French.

PHOTO





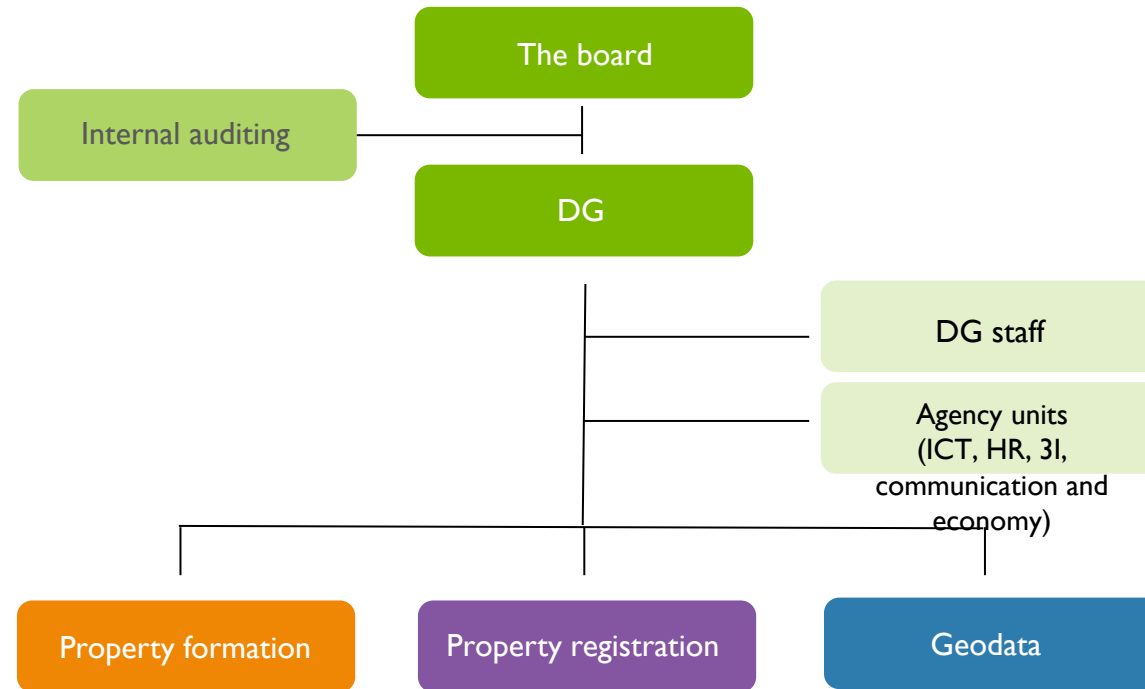
THE SWEDISH REAL PROPERTY REGISTER, GEODATA AND ENVIRONMENTAL INFORMATION

JOINT PCC AND EUROGEOGRAPHICS CLRKEN WEBINAR, PCC CONFERENCE
LISBOA, 26 OF MAY 2021

GUNNAR ERSBO, MAGDALENA ANDERSSON



LANTMÄTERIET'S ORGANIZATION

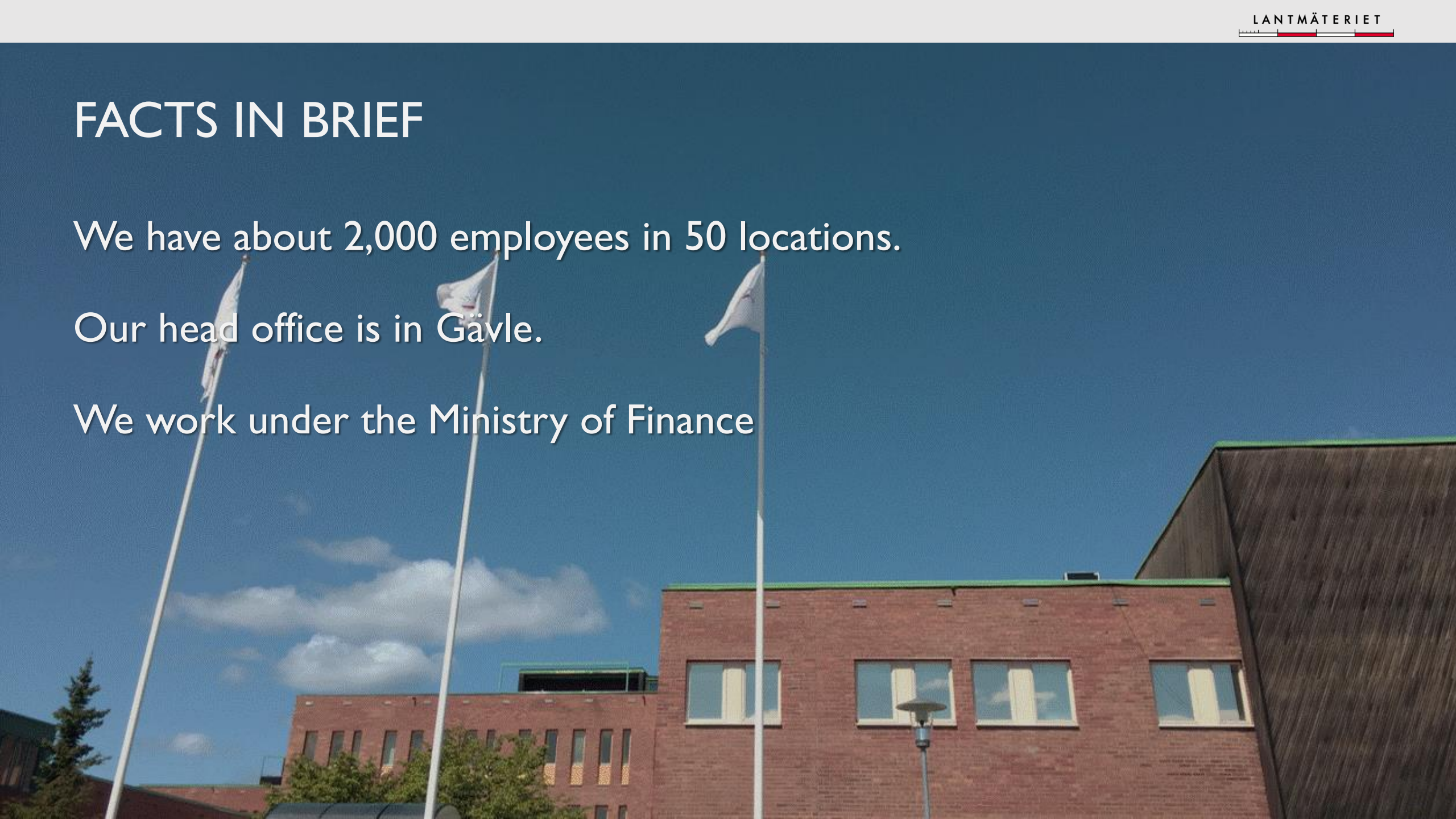


FACTS IN BRIEF

We have about 2,000 employees in 50 locations.

Our head office is in Gävle.

We work under the Ministry of Finance





Lantmäteriet has been mapping Sweden since 1628

Byssjön

REAL PROPERTY REGISTER

Sweden has a long tradition of work with real property information.

- ▶ 1227 – Oldest known document about land transfer
- ▶ 1628 – Systematic survey of Sweden started

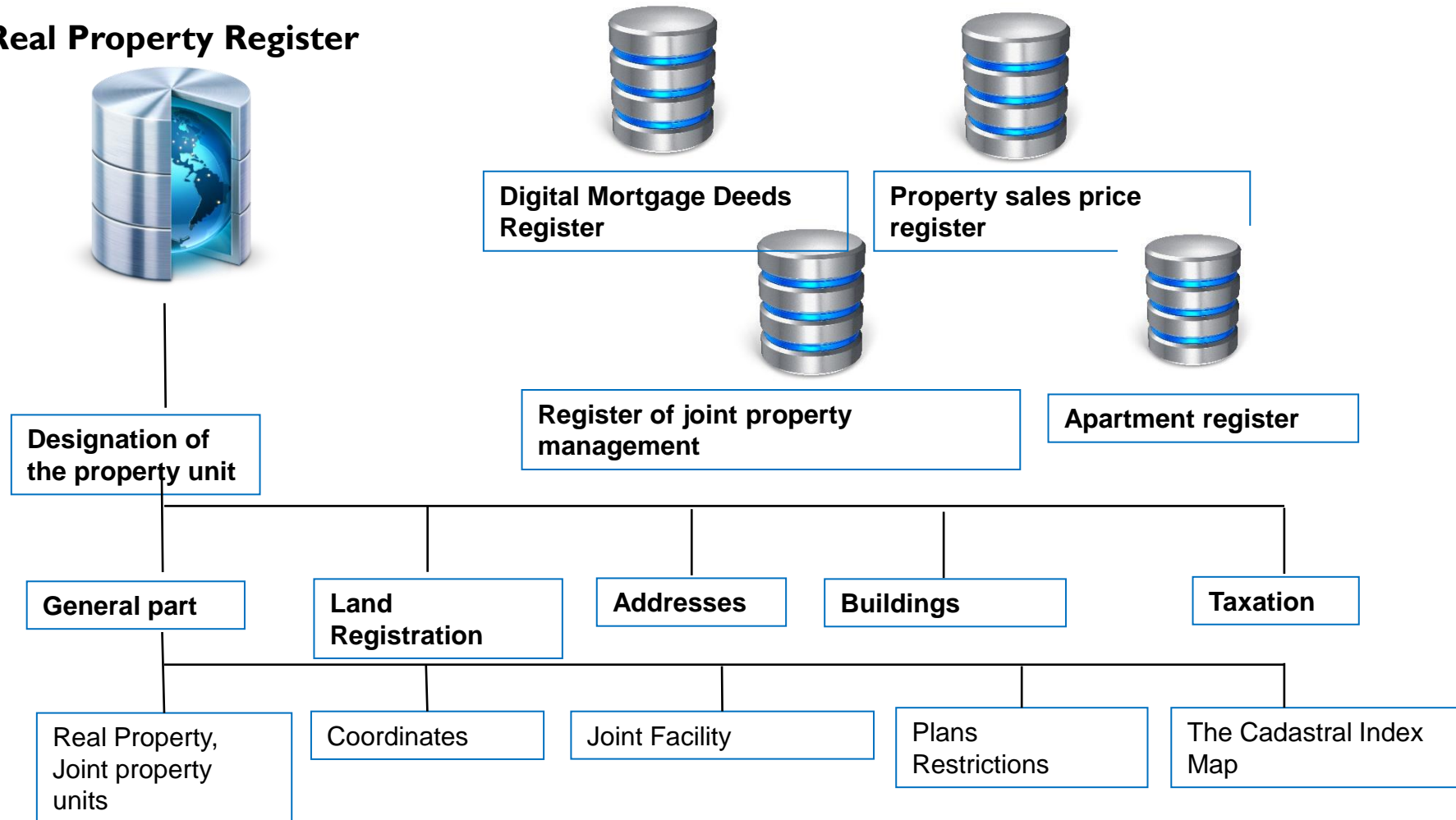


- ▶ 1995 – Property data reform was finished, **test started in 1969 and production from 1976.**
- ▶ 2021 Platform – provision of data (step 1, detailed plans and buildings)
- ▶ 2025 Smart built environment – building, planning and cadastral activities in one process



REAL PROPERTY INFORMATION

Real Property Register



GEOGRAPHIC INFORMATION

Aerial photo interpretation

Cooperation with other parties

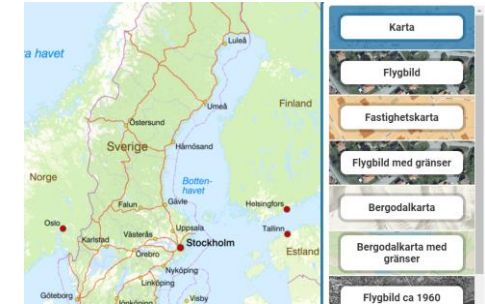
Co-operation with municipalities

Cartography

Digital e-services:

[Min Karta \(lantmateriet.se\)](http://MinKarta.lantmateriet.se)

<https://kartutskrift.lantmateriet.se>



Kartan är anpassad för utskrift i olika pappersformat och i skala 1:10 000 kan fastighetsindelning och/eller gatunamn läggas till. Färgen och rastretningen kan visas olika bra i olika pdf-läsare.

[Gå till Kartutskrift](#)



Skärmbild från e-tjänsten Kartutskrift som visar kartutsnitt med bladindelning.

PARTICIPATING AUTHORITIES AND ORGANIZATIONS IN THE GEODATA COUNCIL

The national board of housing, building and planning,
The county administrative board of Värmland,
The Swedish civil contingencies agency,
The Swedish environmental protection agency,
The Swedish maritime administration,
Statistics Sweden,
Swedish association of local authorities and regions
Swedish university for agricultural sciences
Swedish meteorological and hydrological institute
The Swedish forest agency,
The Swedish transport administration
Swedish agency for Marine and water management
The City of Malmö



Lantmäteriet and environmental information

Provide up-to date and reliable geodata - a basis for the society and its development. E.g. rights and restrictions affecting a property, an area. The information is fundamental for e.g. planning, management of resources, environmental analysis work .

Well-developed co-operation in areas of up-dating data, provision and combination of geodata, development activities.

Some examples:

- Building information and their attributes
- Infrastructure development: roads, railroads, broadband, charging posts for cars etc.
- Hydrography in network
- Questions on a Marine Cadastre (water and land management)

A smarter planning and building process and a national platform for provision of geodata.
Activity plan as to the geodata strategy for 2021 – 2025

THANK YOU! QUESTIONS?

